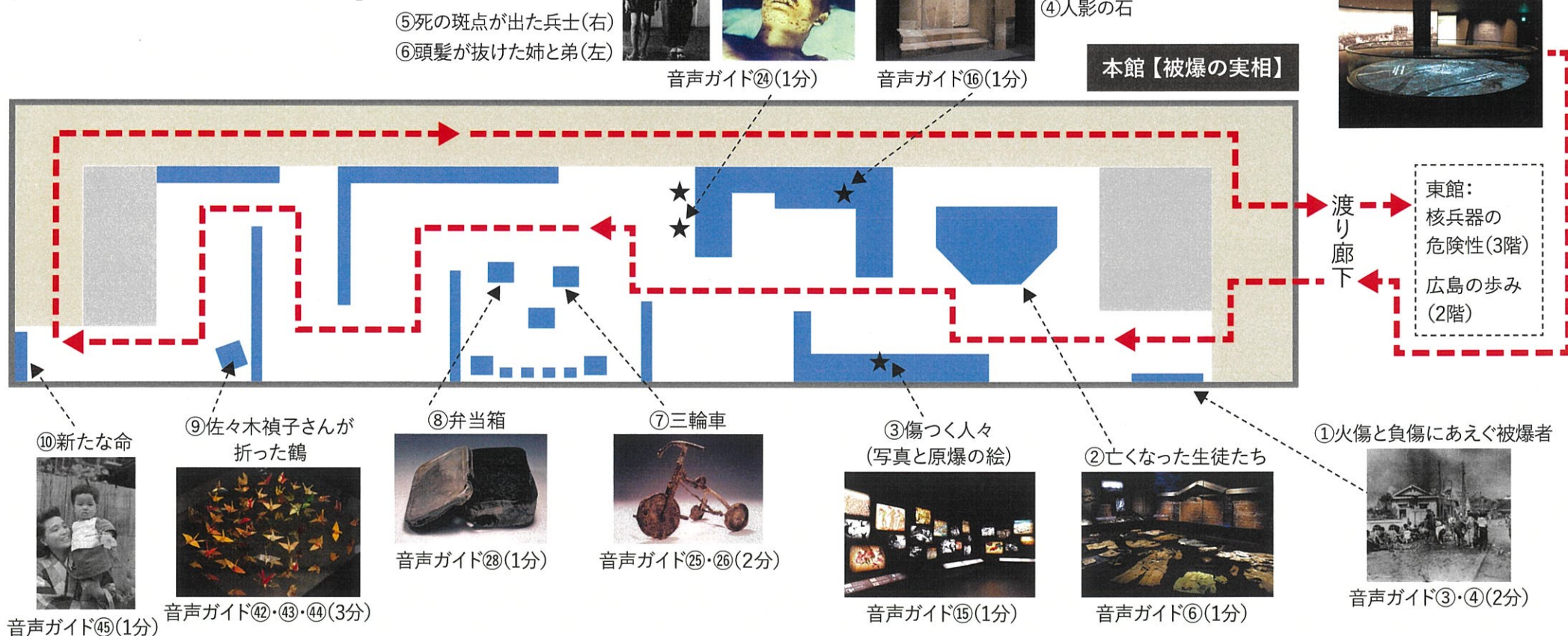


広島平和記念資料館 本館見学のご案内 ～必ずご覧いただきたい資料のご紹介～

本館は、被爆者の遺品、被爆の惨状を示す写真や資料など約500点を展示しており、そのうち、ぜひともご覧いただきたい資料を厳選してご紹介しています。

来館の際、あまり時間がない場合でも、少なくともこれらの資料をご覧いただき、被爆の実相を理解し、全人類の共存と繁栄を願い、真の世界平和の実現を祈念する「ヒロシマの心」を共有していただければと考えています。

【本館のコース図の見学所要時間：約30分】



問合せ先：広島平和記念資料館
<https://hpmuseum.jp/>
 TEL:082-241-4004



《見学ルートのご案内》

東館1階からエスカレーターで3階に上がり、パノラマ映像を見学後、渡り廊下を通って本館にお進みください。
 本館では、「8月6日のヒロシマ」や被爆者・遺族の今日までの苦しみや悲しみに触れることができます。
 本館見学後、再び渡り廊下を通り、時間がない場合は、東館3階からエレベーターで1階に降りてください。
 時間が許せば、核兵器や平和の取組みを学べる東館(核兵器の危険性(3階)、広島の歩み(2階))をご覧ください。

【東館の見学所要時間：約30分】

【写真クレジット】1.松重美人撮影,中国新聞社所有,日本写真保存センター所蔵/4.住友銀行広島支店寄贈/5.木村権一撮影/6,10.菊池俊吉撮影,田子はるみ提供/7.鎌谷信男寄贈/8.折免シゲコ寄贈/9.佐々木繁夫・雅弘寄贈(敬称略)

Hiroshima Peace Memorial Museum

Visitor Guide for the Main Building

- Must-See Exhibits Introduction -

The Main Building exhibits about 500 items, including victims' belongings, photographs of the devastation, and related materials. Below are selected materials we strongly recommend viewing.

Even with limited time, we encourage you to visit these items in particular to understand the reality of the atomic bombing and embrace the "Spirit of Hiroshima," a wish for humanity's coexistence, prosperity, and true world peace.

[Estimated time taken for the suggested Main Building course: Approx. 30 minutes]

«Route Guide»

Start your tour in the East Building by taking the escalator from the 1st to the 3rd floor. After viewing the projection mapped model, proceed to the Main Building via the connecting corridor.

In the Main Building, explore what happened in Hiroshima on August 6 and the enduring pain and sorrow faced by the hibakusha and their families.

After touring the Main Building, return via the corridor. If you are short on time, take the elevator from the East Building's 3rd floor to the 1st floor.

If time allows, visit the East Building exhibits on nuclear weapons and peace efforts: "The Dangers of Nuclear Weapons" (3rd floor) and "Hiroshima History" (2nd floor).

[Estimated time to view the East Building: Approx. 30 minutes]

East Building 3rd floor Introductory Exhibit

The Devastated City
(Time required: approx. 2 mins)



Main Building Reality of the Atomic Bombing



5. Soldier with "Spots of Death" (right)
6. Sister and brother who lost their hair (left)

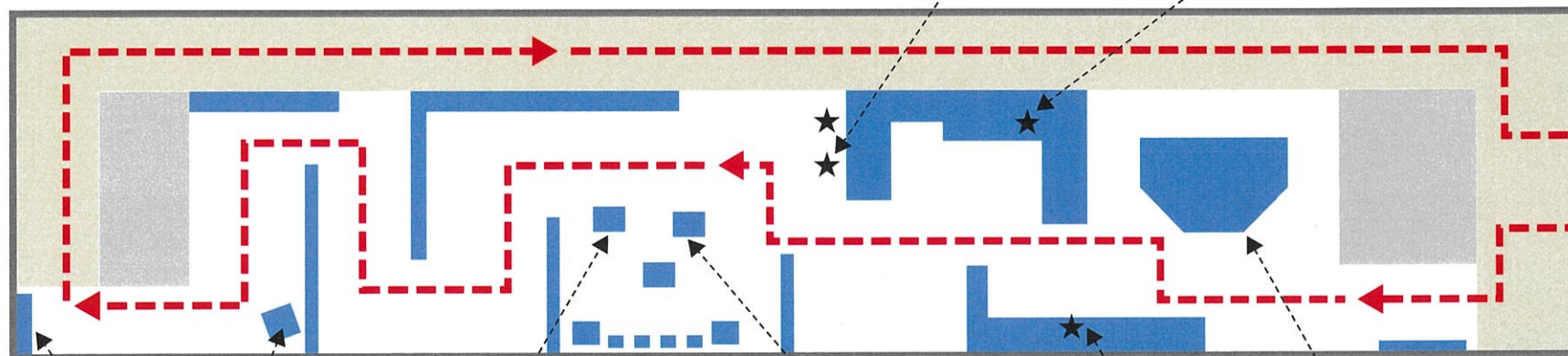


Audio guide 24 (1 min)



Audio guide 16 (1 min)

4. Human shadow etched in stone



Corridor

East Bldg.
The Dangers of Nuclear Weapons
(3rd floor)

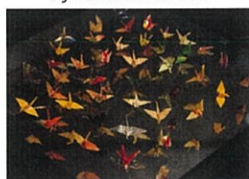
Hiroshima History
(2nd floor)

10. New life



Audio guide 45
(1 min)

9. Paper cranes folded by Sadako Sasaki



Audio guide 42&43&44
(3 mins)

8. Lunch box



Audio guide 28
(1 min)

7. Tricycle



Audio guide 25&26
(2 mins)

3. The Injured
(Photos and A-bomb Drawings by Survivors)



Audio guide 15
(1 min)

2. Children killed in the bombing



Audio guide 6
(1 min)

1. Survivors suffering from burns and other injuries



Audio guide 3&4
(2 mins)

Contact: Hiroshima Peace Memorial Museum
<https://hpmuseum.jp/?lang=eng>
TEL: +81-82-241-4004



[Photo Credits] 1. Photo by Yoshito Matsushige, Owned by the Chugoku Shimbun, Archived at the Photo Archives of Japan / 4. Donated by Sumitomo Bank, Hiroshima Branch / 5. Photo by Gonichi Kimura / 6.&10. Photo by Shunkichi Kikuchi, Courtesy of Harumi Tago / 7. Donated by Nobuo Tetsutani / 8. Donated by Shigeko Orimen / 9. Donated by Shigeo and Masahiro Sasaki