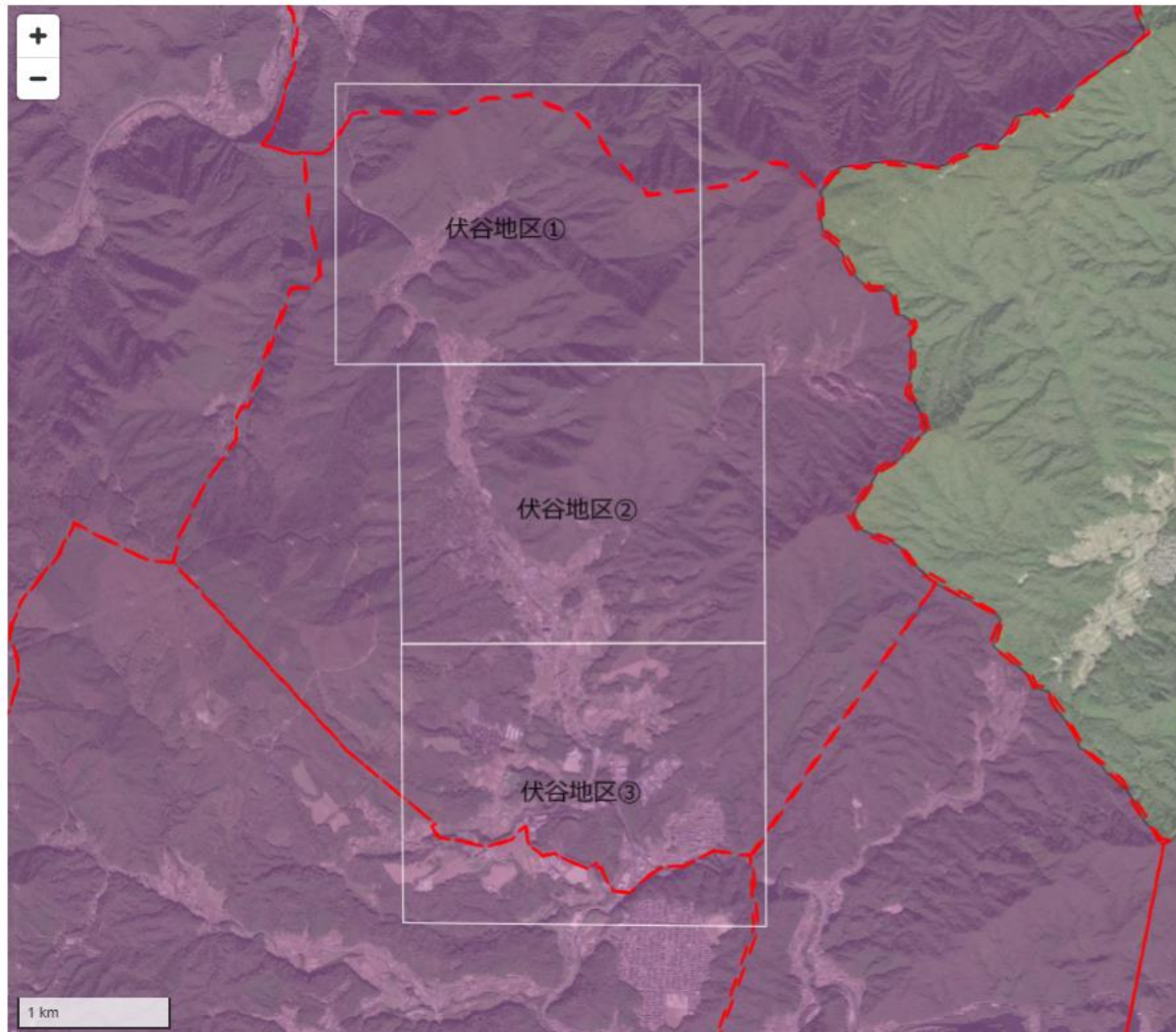


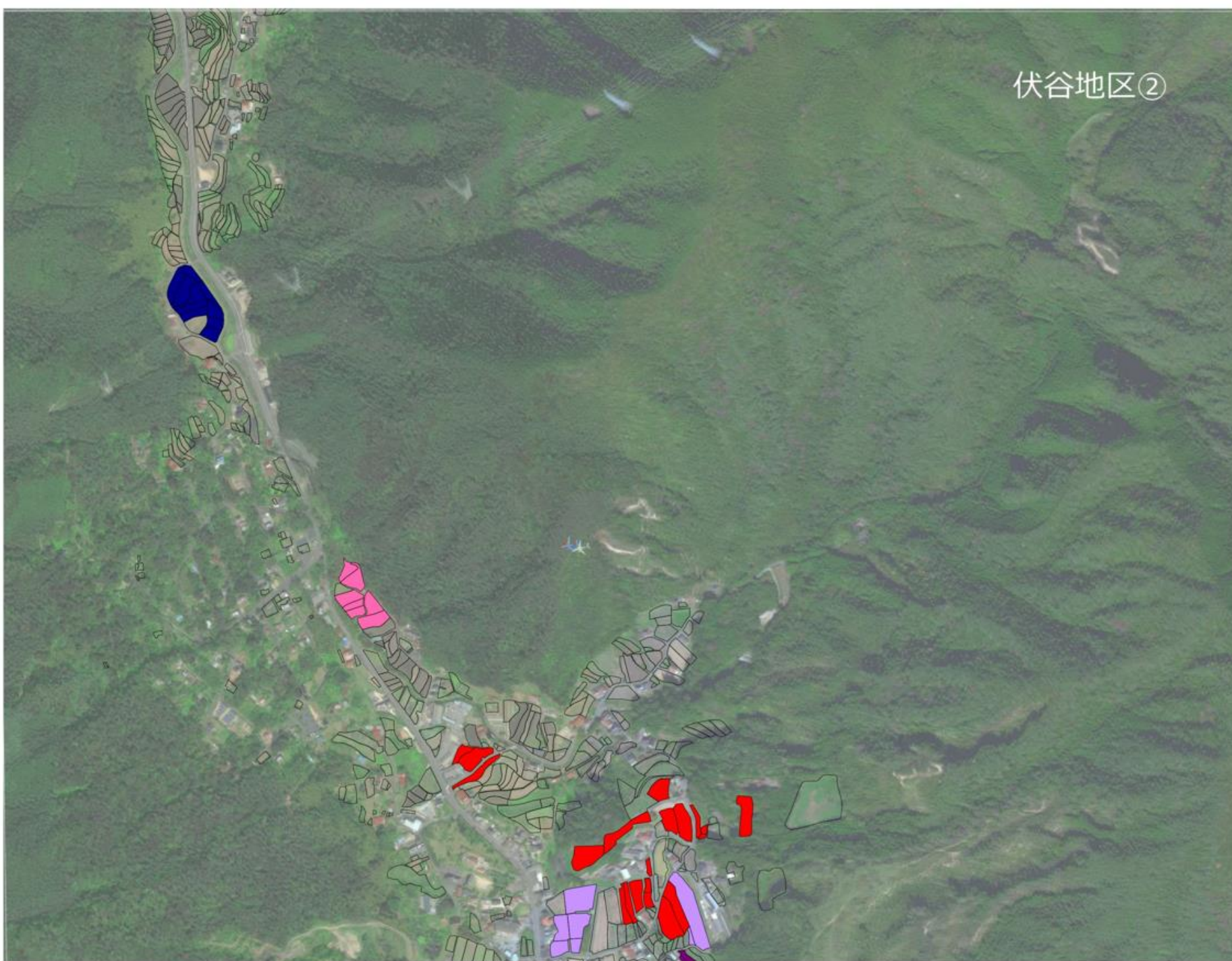
# 伏谷地区全体図



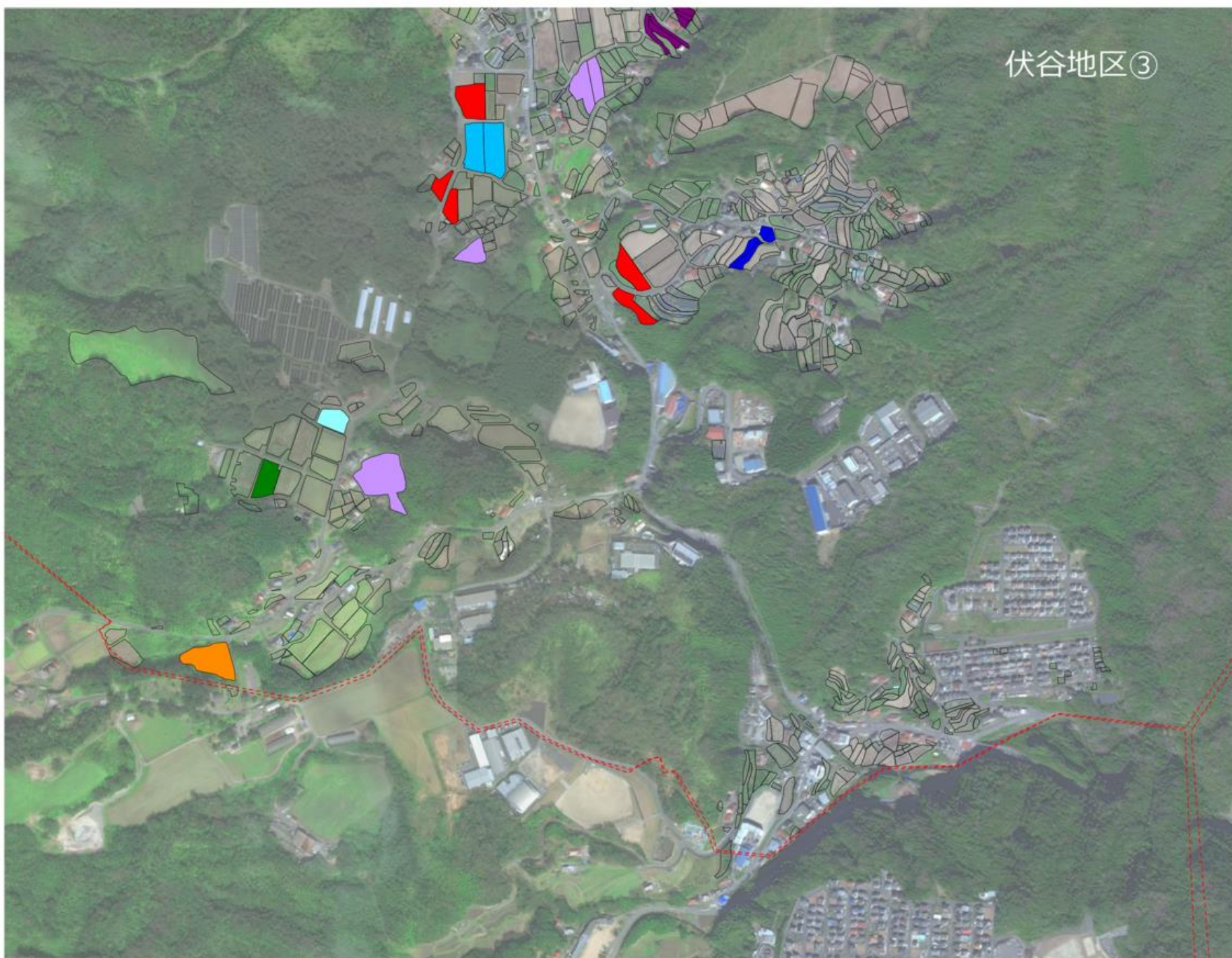


- 61
- 27
- 18
- 23
- 68
- 86
- 33
- 13
- 17
- 51
- 87

伏谷地区①



- 61
- 27
- 18
- 23
- 68
- 86
- 33
- 13
- 17
- 51
- 87



- 61
- 27
- 18
- 23
- 68
- 86
- 33
- 13
- 17
- 51
- 87