



## Moto-machi District Revitalization Plan

Our vision for a better and brighter town  
where people of all generations can live in harmony

The City of Hiroshima  
May 2020



# Introduction

With the appearance of various district issues which come with the rise in the aging population and declining birthrate, the Moto-machi district instituted the Moto-machi Housing District Revitalization Plan in July 2013, and has since been involved in district revitalization initiatives.

However, in the five years that have passed since the institution of the plan, the situation and the issues (such as finding leaders to carry out community activities) have only become more serious, and it is now more important than ever that we proceed swiftly in our initiatives.

To this end, the citizens of the Moto-machi district and the City of Hiroshima shared the Town Planning Vision for the Future of the Moto-machi District in December 2018, a plan which aims to create a better and brighter town where people of all generations can live in harmony.

The town envisioned in this plan is not only one in which the lives of the citizens are important and the community revitalized, but is also a town which takes advantage of its location (next to the heart of the city), and is a leader in the further development of Hiroshima. To realize this vision, we must not be satisfied with just continuing our current initiatives: we must be proactive in developing new ones.

It is in this philosophy that we have established this new Moto-machi District Revitalization Plan, so that we may begin the initiatives necessary to make our vision a reality.

In this new plan, we're focused on creating new initiatives focused on people (promoting occupancy of younger generations/young families, improving learning environments) and facilities (constructing/improving facilities to support senior citizens, developing greenery and waterways, etc).

Together, the citizens of the district and the City of Hiroshima will work, steadfast and true, on the initiatives put forth in this plan, as we aim for the realization of a better and brighter town where people of all generations can live in harmony.





Table of Contents

Chapter 1 Regarding the Moto-machi District Revitalization Plan p. 1

Chapter 2 The Moto-machi District Today and Issues at Hand p. 2

Chapter 3 Vision for the Future p. 3

Chapter 4 Initiatives Towards the Future p. 4

    The Road to Revitalization p. 4

**Living in Harmony Across Generations**

        1) An Intergenerational Town p. 5

        2) A Town to Raise Your Children In p. 7

        3) A Town to Grow Old In p. 9

**A Better Town**

        4) A Town of Cultural Exchange p. 11

        5) A Town of Greenery and Beauty p. 12

**A Brighter Town**

        6) A Town Rich in Community Exchanges p. 13

Chapter 5 Plan Promotion System p. 15

Attached Documents:

    Map of Moto-machi Apartment Locations, etc p. 16

    Moto-machi District Revitalization Plan Committee p. 17

    List of Plan Initiatives p. 18

1) Overall Objective

The Moto-machi district faces many different community issues that come with the rise in the aging population, such as stagnation in community activities. Our overall objective is to revise the Moto-machi Housing District Revitalization Plan, and institute a new plan to work towards the revitalization of the district as a better and brighter town where people of all generations can live in harmony.

2) Initiatives

Given that the Moto-machi district is solely comprised of public facilities (municipal housing, elementary school, daycare facility, etc) on national government-owned land, city government involvement in facilities development is a necessity. For this reason, it is our philosophy that district citizens and the city government must collaborate on revitalization initiatives.

Here too, initiatives will proceed with the idea of “*kizuna*” (connection) in mind, which was one of the basic principles outlined in the former revitalization plan, and has been used as a slogan which encapsulates the spirit of Moto-machi district residents supporting and helping each other.

3) Timeframe

Keeping in mind the Town Planning Vision for the Future of the Moto-machi District shared by Moto-machi district citizens and the City of Hiroshima in December 2018, this plan calls for initiatives over the course of ten years. Furthermore, we shall revise the plan as needed depending factors such as the circumstances of the district or changes in the surrounding environment.

4) Priority Items and Priority Initiatives

In order to maximize the efficiency of this plan, we have established priority items; initiatives under these items which are expected to be especially effective have been ranked as priority initiatives. The targets and roles of the parties responsible for carrying out these initiatives are also listed.

## Chapter 2: The Moto-machi District Today and Issues at Hand

The Moto-machi district is a town built on government-owned land, composed strictly of a municipal housing complex: 17 mid-rise apartment buildings built between FY 1956 and 1967 (total of 615 apartments) and three high-rise apartments built between FY 1971 and 1975 (total of 2,769 apartments), as well as public facilities such as municipal-run stores, elementary school, daycare facility, and kindergarten. However, 40 years have passed since the initial construction of the Moto-machi district. The following issues, along with building deterioration and aging, require immediate attention.



### Issue 1: The rise in the aging population and declining birthrate

The ratio of aging residents in the Moto-machi district is 47.4%, which is up 4.1 points from the ratio at the time of the introduction of our previous plan (2013). With this, the executive members of neighborhood associations are aging only further, highlighting the need to bring in new leaders for community activities.

The percentage of children under 18 is also at 9.4%, which is lower than the average for Hiroshima City, and 1.0 points lower than it was at the time of the introduction of our previous plan (2013). The number of students at Moto-machi Elementary School has dropped from 119 to 89.

### Issue 2: Differences in lifestyle between residents of different nationalities

The percentage of international residents in Hiroshima City is 1.6%, while the percentage per population inside the Moto-machi district is as high as 22.2%. With a higher ratio of international residents, we recognize the need for support which overcomes differences in culture and lifestyles in dealing with everyday issues such as garbage disposal or noise levels.

### Issue 3: Decreased levels of town activity and vitality

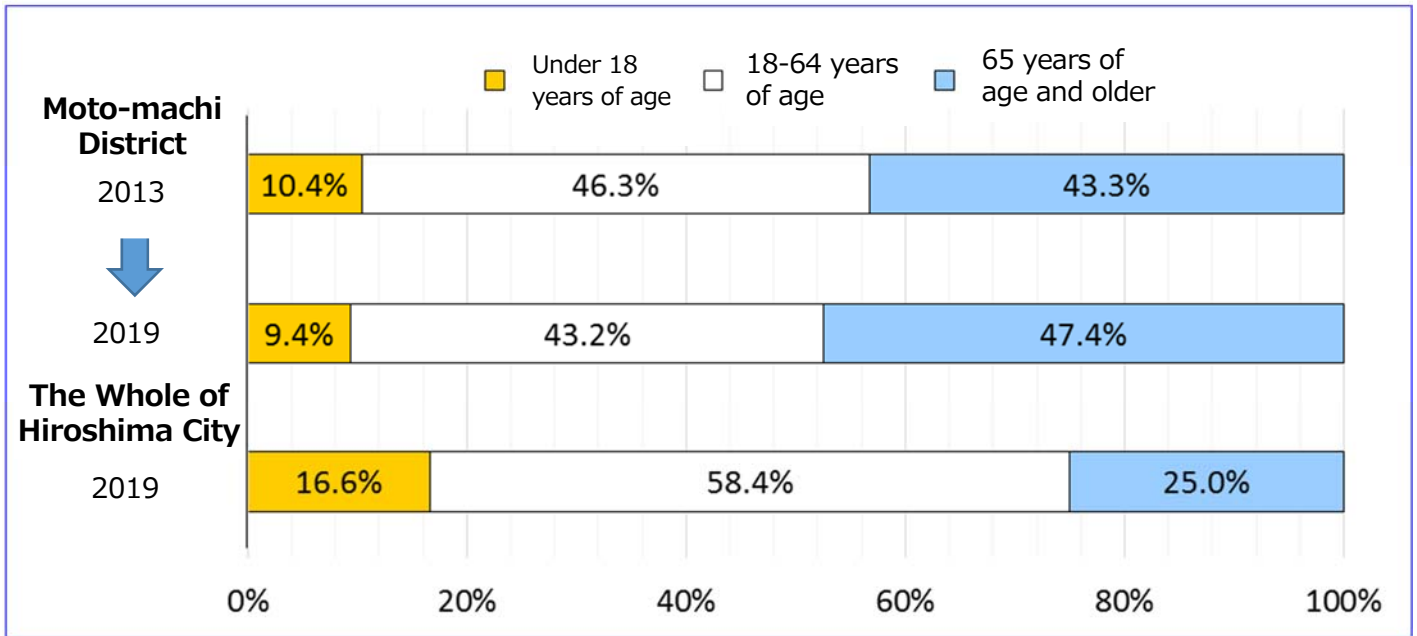
In the Moto-machi district, there has been a marked decrease in town activity and vitality, due in part to the development of businesses in the surrounding districts, which has led to a decrease in the consumers at municipal-run stores, and to a decrease in district events and community activities.

Moto-machi Apartment Statistics (as of April 1, 2019)

Category	Midrise Buildings	Highrise Buildings	Total
Apartments under management	615	2,769	3,384
Occupied apartments	454	1,952	2,406
Occupant numbers	783	3,264	4,047

Note: Occupied apartment numbers and occupant numbers include young families and students living in municipal housing under exceptional terms that they participate in community activities.

Comparison of resident ages from the implementation of the previous plan in 2013 to current



Note: These numbers are current as of April 1 of the relevant year (March 31 in terms of the whole of Hiroshima City).



## Chapter 3: Vision for the Future

A better and brighter town where people of all generations can live in harmony—this is the future we envision for the Moto-machi district. In order to realize this vision, we will implement the initiatives listed in the three main pillars and six areas of focus found below.

### Living in Harmony Across Generations

#### 1) An Intergenerational Town

Dedicated to facilitating the promotion of young families and families raising children to take up residency and create an intergenerational community.

#### 2) A Town to Raise Your Children In

Moto-machi Elementary School, in anticipation of a rise in student numbers, will develop a learning environment where the individual educational needs of children are met, with the cooperation of district residents. We will also further improve early childhood education and daycare facilities to make the district a place where children can grow, and where parents feel comfortable raising children.

#### 3) A Town to Grow Old In

Committed to creating a town where the elderly can live comfortably by building a long-term care living facility with lodging accommodation in the district so that elderly parents can live close to their children.

### A Better Town

#### 4) A Town of Cultural Exchanges

Building a town full of cultural exchanges where international and Japanese residents find mutual understanding and respect through recognizing differences in lifestyle and culture.

#### 5) A Town of Greenery and Beauty

Designing a lush and beautiful town by effectively making use of the former plot of the Moto-machi prefectural housing complex along the former Ota-gawa River and securing wide open spaces that utilize the greenery and waterfronts along the adjacent Chūō Park.

### A Brighter Town

#### 6) A Town Rich in Community Exchanges

Creating a promising and lively town by making use of places like the Moto-machi Shopping Center and turning them into hubs for meeting and exchanges.

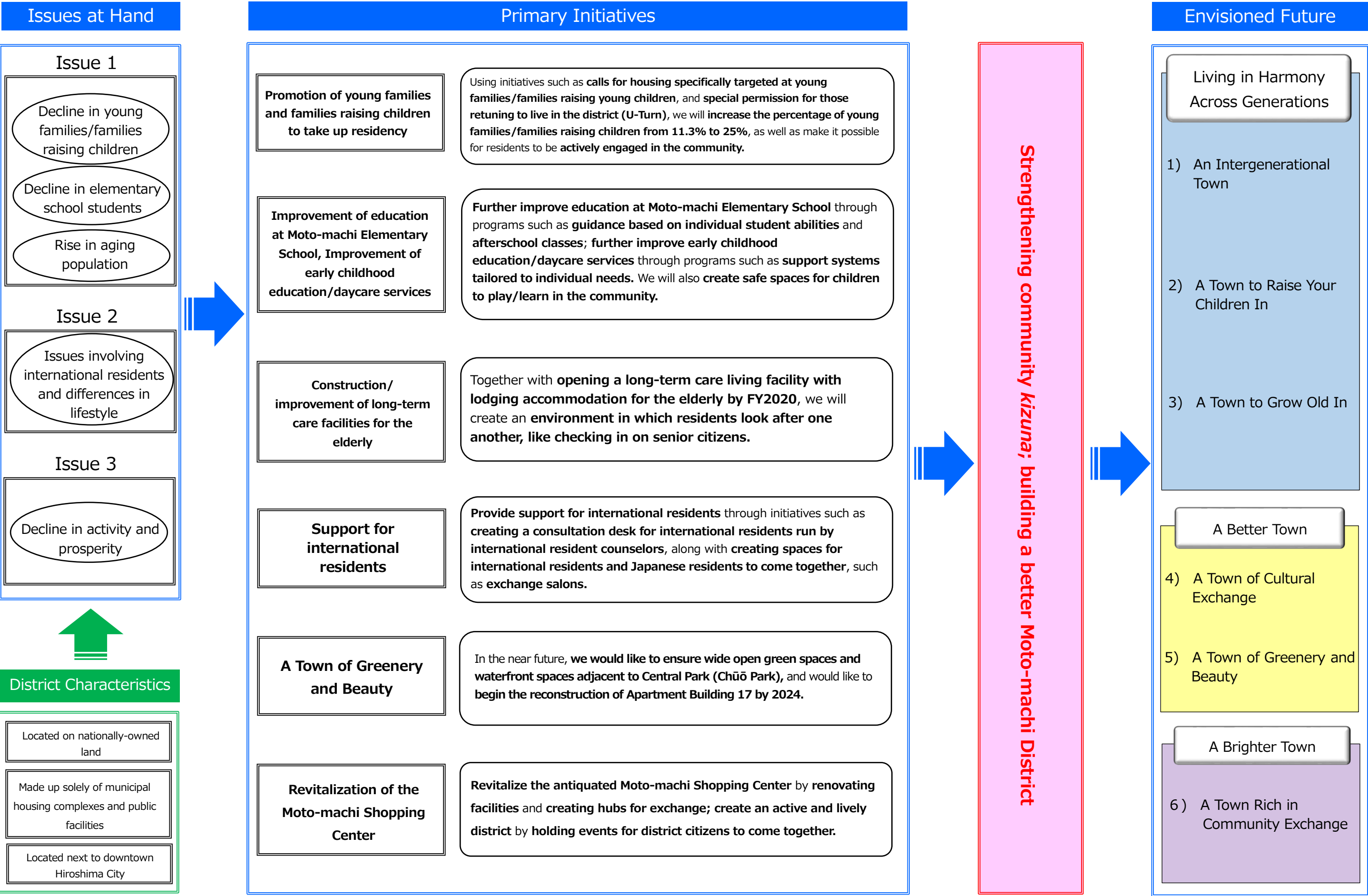
### The Future Vision of the Moto-machi District

## A better and brighter town where people of all generations can live in harmony





Chapter 4: Initiatives Towards the Future (The Road to Revitalization)





# Living in Harmony Across Generations

## 1 An Intergenerational Town

In addition to securing new leaders to take the reins from the aging population in community activities, the district is committed to encouraging young families/families raising children to take up residency, and building a well-balanced intergenerational community in order to maintain and revitalize the district. We also want to make the Moto-machi district a place where those who believe in the district and its potential can live, such as U-turn families (previous residents of the Moto-machi district).



### Principle Initiatives

- **Promoting Residency of Young Families/Families Raising Children**
  - Implement special residency permission and make efforts to welcome new residents
  - Secure residents who can be active right away in the community (U-Turn families: families who return to the Moto-machi district from outside of the district)
  - Call for housing specifically targeted at young families/families raising children and make efforts to welcome new residents
  - Secure parking space for special residents
  - Secure housing for families of 4 or more
- **Making It Easy To Be Active**
  - Build the framework for a Volunteer Bank geared towards young families
  - Hold community events for interaction between young families and district residents
  - Create an environment conducive to participating in community activities

### Priority Item Promoting Residency of Young Families/Families Raising Children

We aim to build an intergenerational community, and bring the current percentage of young families/families raising children living in the Moto-machi Apartments up from 11.3% to the average for the whole of the City of Hiroshima (25%).

### Priority Initiative: Implement Special Residency Permission and Make Efforts to Welcome New Residents

This initiative was created to secure new leaders in community activities. Under this initiative, permission for special residency in the Moto-machi Apartments shall be granted to those who do not meet the criteria for municipal housing due to reasons such as making more than the stipulated income (young families, students, U-Turn families returning to the Moto-machi district to take care of their parents, families who contribute to the community), under the condition that they proactively involve themselves in community activities. We will also work to create an environment of acceptance to facilitate lifetime residency in the community.

Target	Bring in 55 families under the special residency permission initiative by 2021.
Responsible Party: Local Community and Local Government	<b>Role of the local community:</b> Find the kind of people needed in the community, and to speak with new community members and make them feel welcome, etc. <b>Role of the local government:</b> Build a system, put out listings/accept applications for new residents, etc.



## Chapter 4: Initiatives Towards the Future

**Priority Initiative: Secure residents who can be active right away in the community (U-Turn families)**

We are committed to securing residents who can be active right away in the community. To this end, we will create a system in which localities can recommend promising individuals as U-Turn families (previous Moto-machi Apartment residents returning to take the lead in community activities) admitted under the special residency initiative who are familiar with the Moto-machi district and have the potential to take the lead in community activities.

Target	Of the 55 families admitted under the special residency initiative by FY2021, 10 of them shall be U-Turn families.
Responsible Party: Local Community and Local Government	<b>Role of the local community:</b> Find promising new leaders in community activities and recommend them for residency, etc. <b>Role of the local government:</b> Create the framework for locality recommendations, review residency criteria for recommended candidates, etc.

**Priority Initiative: Call for housing specifically targeted at young families/families raising children and make efforts to welcome new residents**

Under this initiative, we will conduct a call for resident applications limited to young families/families raising children (provided they meet the application criteria for municipal housing, such as income prerequisites, etc) during our regular call for Moto-machi Apartment resident applications. We will also work to create an environment of acceptance to facilitate lifelong residency in the community.

Target	Conduct housing calls for 50 tenancies per FY limited to young families/families raising children.
Responsible Party: Local Community and Local Government	<b>Role of the local community:</b> Speak with new community members and make them feel at home, etc. <b>Role of the local government:</b> Build a system, put out listings/accept applications for new residents, etc.

**Initiative: Secure parking space for special residents (local community/local government)**

The lack of parking space has been cited as a reason why potential residents shy away from applying for special residency. To combat this, we are committed to making effective use of empty space within the district as flexible parking spaces.

**Initiative: Secure housing for families of 4 or more (local government)**

In our housing renovations of the high-rise buildings, we will provide housing for families of 4 or more to live comfortably in through measures such as combining two residences into one larger residence.

**Initiative Item**

**Making it easy to be active**

The most important element in ensuring that young families/families raising children participate and are active in the community is creating an environment conducive to participation. To create such an environment, we will work to do the following: make community event information accessible to young families, create a framework that makes it easy for community residents to communicate with young families, build a place to strengthen the connections between apartment residents and community residents, as well as foster their solidarity, among other initiatives.

**Initiative: Build the framework for a Volunteer Bank geared towards young families (local community)**

Build a framework in which young families who will take the lead in community activities are encouraged to register as community volunteers through the Social Welfare Council Volunteer Bank system. In addition, work for the promotion of joining volunteer activity insurance to provide peace of mind in community activity undertakings.

**Initiative: Hold community events for interaction between young families and district residents (local community)**

To follow-up after young families/families raising children move in, we will hold community events for young families and district residents aimed at promoting an environment which is conducive to active participation in community activities and at strengthening the connections between young families and district residents.

**Initiative: Create an environment conducive to participating in community activities (local community)**

Communicate and make information about community activities and events accessible to residents in advance to make it easy for young families/families with young children to participate.



Moto-machi District Residents Field Day where residents of all generations take part in sports events (held every October) (1)



Moto-machi District Residents Field Day (2)



Living in Harmony Across Generations

2 A Town to Raise Your Children In

Moto-machi Elementary School, in anticipation of a rise in student numbers, will develop a learning environment where the individual educational needs of children are met, with the cooperation of district residents. We will also further improve early childhood education and daycare facilities to make the district a place where children can grow, and where parents feel comfortable raising children.



Principle Initiatives

- **Further Improvement of Education at Moto-machi Elementary School**
  - Thorough guidance based on individual academic abilities
  - Implement afterschool classes
  - Better communication between the daycare service, kindergarten, and elementary school
- **Further Improvement of Daycare Services/Early Childhood Education**
  - Further improve support systems tailored to individual needs
  - Promote global understanding in children and their parents/guardians
- **Creating an Environment Conducive to Raising Children**
  - Operation and usage of the *Hono-Bono Bunko* Library Moto-machi
  - Create safe spaces for children to play/learn in the community
  - Further improve and strengthen child safeguards and neighborhood watches

Priority Item

Further Improvement of Education at Moto-machi Elementary School

We’re committed to creating a mindful learning environment through policies such as further improvement of supplementary education, including afterschool learning, and more personalized guidance based on students’ individual academic ability. Uniquely surrounded by a well-planned and developed daycare facility, kindergarten, elementary school, children’s community center, and more, Moto-machi Elementary School will promote multicultural tolerance, improved basic academic skills, and connection/exchanges between the neighboring daycare facility/kindergarten.

Priority Initiative: Thorough Guidance Based on Individual Academic Abilities

We will promote the improvement of basic academic skills by offering thorough guidance based on individual academic abilities, such as (a) the implementation of guidance based on individual academic abilities, (b) improved grasp of Japanese language abilities and implementation of detailed Japanese language guidance, and (c) school revitalization through university student teacher programs.

Target	A 100% school satisfaction rate among students.
Responsibly Party: Local Government	<b>Role of the local government:</b> 1) Implement guidance based on individual academic ability across all grades. 2) Implement Japanese language guidance based on individual ability. 3) Further improve the school library through appointing a dedicated school librarian.



## Chapter 4: Initiatives Towards the Future

### Priority Initiative: Implement afterschool classes

Provide afterschool classes in venues such as extra classrooms at school or children's community center which offer study support, as well as a variety of activity programs for children in cooperation with the community.

Target	A 100% school satisfaction rate among students.
Responsible Party: Local Community and Local Government	<b>Role of the local community:</b> Implement study support and activity programs, etc. <b>Role of the local government:</b> Provide full cooperation and support for all programs and activities, such as planning, operation, etc.

### Initiative: Better communication between the daycare service, kindergarten, and elementary school (local government)

Work to promote communication and exchange between the elementary, kindergarten, and daycare levels of education with Moto-machi Elementary School at the center of cooperation and communications.

### Priority Item Further Improvement of Early Childhood Education/Daycare Services

The number of international children is on the rise at Moto-machi Daycare. To facilitate acceptable social behavior and a smooth transition into elementary school, we will promote the acquisition of vocabulary necessary in everyday life using pictures and other visual aids. In addition, we will also foster skills, such as following the rules and communication through play with other children.

Ensuring smooth communication with international parents/guardians is another priority, as is creating opportunities for children and parents/guardians to experience different cultures so that we may promote mutual understanding.

### Priority Initiative: Further improve support systems tailored to individual needs

Further improve support systems tailored to individual needs through measures such as appointing staff to aid in communication with international children and their parents/guardians. More concretely, we shall:

- (1) Realize and accept the needs of the individual to promote their stability.
- (2) Promote the acquisition of vocabulary necessary in everyday life using pictures and other visual aids.
- (3) Foster skills such as following the rules, and communication (appropriate linguistic usage and expression by situation, how to express one's feelings, etc) through play with other children.

Target	A 100% daycare service satisfaction rate among 6-year-olds.
Responsible Party: Local Government	<b>Role of the local government:</b> Provide support for children based on individual needs

### Priority Initiative: Promote global understanding in children and their parents/guardians

Ensure smooth communication with international parents/guardians through measures such as appointing staff to aid in taking care of international children and communicating with their parents/guardians, and using interpretation devices; create opportunities for children and parents/guardians to experience different cultures so that we may promote mutual understanding.

Target	Hold a multicultural event once a year at the daycare facility for children and parents/guardians to experience different cultures.
Responsible Party: Local Government	<b>Role of the local government:</b> Implement multicultural events where participants can experience different cultures.

### Initiative Item Creating an Environment Conducive to Raising Children

Work to create an environment conducive to raising children through measures such as creating safe spaces for children to play/learn, and further improving and strengthening child safeguards and neighborhood watches.

### Initiative: Operation and usage of the *Hono-Bono Bunko* Library Moto-machi (local community)

Utilize the *Hono-Bono Bunko* Library Moto-machi (run by the Moto-machi District Social Welfare Council) as a place of exchange and meeting in an effort to create an intergenerational neighborhood watch.

### Initiative: Create safe spaces for children to play/learn in the community (local community/local government)

Create safe spaces for children to play/learn through measures such as learning support from former teachers/university students (etc), and creating a play space for parents to take their young children run by local district volunteer organizations.

### Initiative: Further improve and strengthen child safeguards and neighborhood watches (local community)

Implement measures such as a Safety Promotion Taskforce comprised mostly of senior citizens to keep watch over children going to and from school, and management of child security cameras by the Kanna Club (comprised of parent/guardians of students at Moto-machi Elementary School).



*Hono-Bono Bunko* Library Moto-machi: a safe space for children



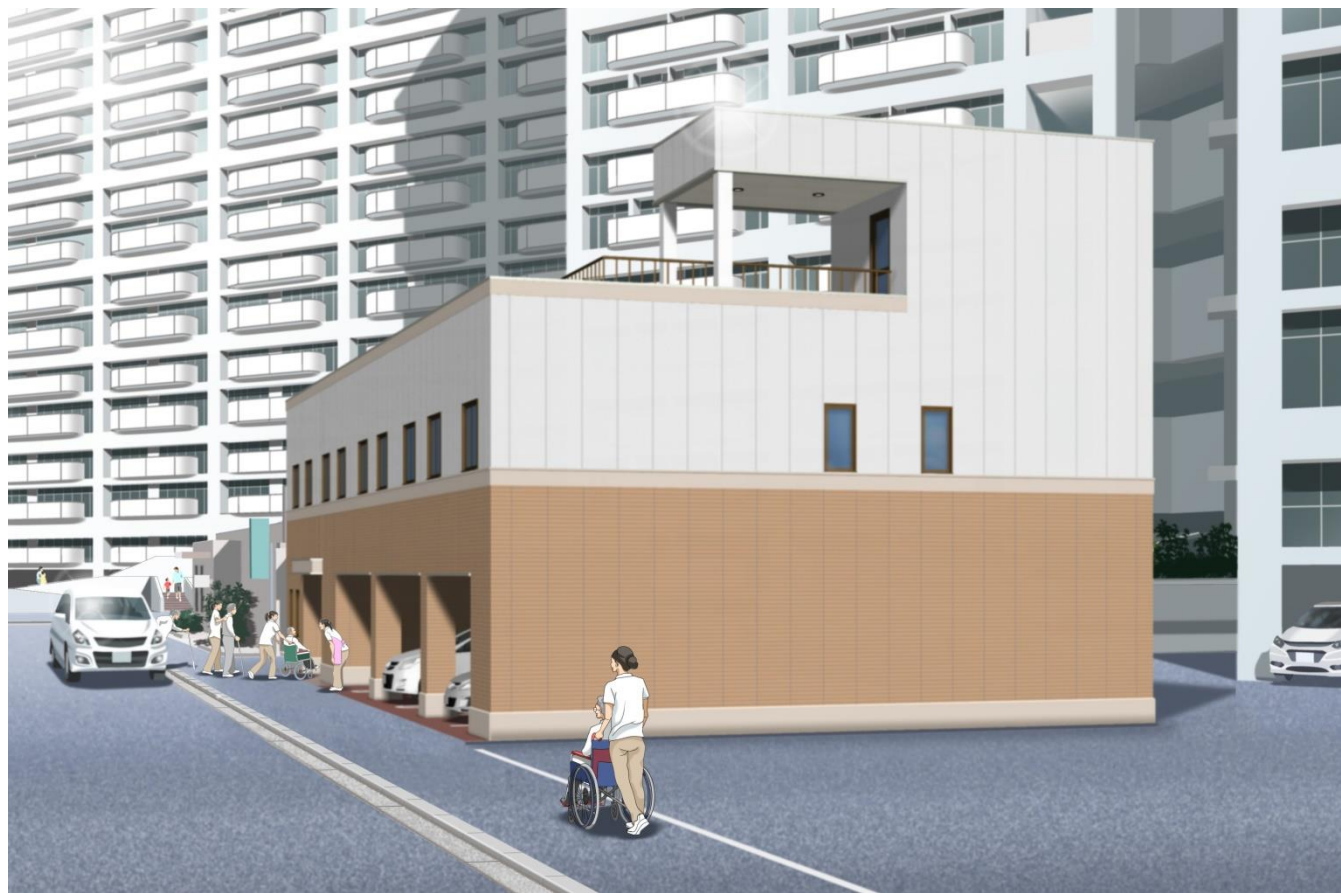
Keeping watch over children going to school



# Living in Harmony Across Generations

## 3 A Town to Grow Old In

To ensure that the elderly can continue to live comfortably in their beloved Moto-machi district, we must respond to both structural and systemic needs. What is important in terms of keeping our senior citizens happy and healthy? Measures such as creating meaningful *raison d'être* and a place in the community have been proven beneficial to senior citizens, contributing to happier, more fulfilled lives. In terms of seniors who need support in their everyday lives, measures such as creating facilities which offer senior care services, as well as established frameworks for seniors to receive the support they need, are also beneficial. We are committed to creating a town in which senior citizens can live comfortably by developing/improving facilities to support senior citizens, creating an environment where senior citizens and the community come together to support one another, and an environment where senior parents who need support in their everyday lives can live close to their children.



### Principle Initiatives

- **Building/improving facilities to support senior citizens**
  - Introduction of long-term care facilities with lodging accommodation
  - Expand barrier-free environments
  - Improve living environments to be considerate of senior citizens who may have mobility issues
- **Creating an environment of mutual support**
  - Checking in on senior citizens in the community
  - Employment/creating *raison d'être* for seniors
  - Hold various activities to facilitate interaction
  - Everyday support of seniors
  - Further improvement/strengthening of disaster prevention/emergency evacuation measures
- **Creating an environment where elderly parents and their children can live close by**
  - Introduction of tenancy systems for U-Turn families

### Priority Item Building/improving facilities to support senior citizens

We are committed to introducing a long-term care facility with lodging accommodation in the Moto-machi district to ensure that senior citizens in the district can continue to live there comfortably.

#### Priority Initiative: Introduction of long-term care facility with lodging accommodation

The process of introduction for a long-term care facility with lodging accommodation is as follows: we begin by first demolishing the vacant building (the former municipal-run Moto-machi Clinic) which currently stands in the lot slated for long-term care facilities. Once the buildings are demolished, we shall put out a public call for and subsequently select companies to build/manage the new facility.

Target	Open a long-term care facility with lodging accommodation by FY2020.
Responsible Party: Local Government	<b>Role of the local government:</b> Public call for/selection of the company to build/manage the facility, subleasing of national government land to said company.



## Chapter 4: Initiatives Towards the Future

### **Initiative: Expand barrier-free environments (local government)**

We will proceed with improving facilities which are considerate of the elderly, such as widening walkways in front of the newly constructed long-term care facility with lodging accommodation, and giving non-slip coating treatments to all ramps in the district.

### **Initiative: Improve living environments to be considerate of senior citizens who may have mobility issues (local government)**

Together with measures such as ensuring that floors are barrier-free (flat and level) or installing handrails during renovations to district high-rise buildings, we will also consider moving senior citizens into more suitable apartments in the district as part of our initiative to improve living environments to be considerate of senior citizens who may have mobility issues.



Moto-machi District Elderly Association  
Event (held every September) (1)



Moto-machi District Elderly Association  
Event (2)

### **Initiative Item Creating an environment of mutual support**

We will work to realize an inclusive community society whose members help themselves and others, and where public aid is readily available, along with a fully realized network of people to check in on the elderly, so that all senior citizens can continue living in their beloved Moto-machi district.

### **Initiative: Checking in on senior citizens in the community (local community/local government)**

Under the central coordination of the Integrated Community Support Center, and in cooperation with various community organizations, strive for information centralization and information sharing about the program to check in on senior citizens.

### **Initiative: Employment/creating *raison d'être* for seniors (local community/local government)**

Provide a place for senior citizens to feel included and to work through measures such as finding human resources via the Community Expert registration system and utilizing the Senior Citizens *Iki-Iki* Point System.

### **Initiative: Hold various activities to facilitate interaction (local community/local government)**

Manage places which are open to the community where senior citizens can interact with the community, such as the *Hono-Bono Moto-machi Salon*.

### **Initiative: Everyday support for seniors (local community/local government)**

Provide support services such as cleaning and taking out the trash through visits by local volunteers to the homes of senior citizens in need of support.

### **Initiative: Further improvement/strengthening of disaster prevention/emergency evacuation measures (local community/local government)**

Work to further improve/strengthen disaster prevention/emergency evacuation measures through activities such as disaster prevention workshops (held by the neighborhood disaster prevention association), utilizing lists of names of those who need extra support in times of evacuation, and making a community disaster preparedness map.



Fitness class at *Hono-Bono Moto-machi Salon*



Making the Community Disaster  
Preparedness Map

### **Initiative Item Creating an environment where elderly parents and their children can live close by**

We are committed to creating an environment in which elderly parents and the children who care for them can live close by, providing both parties with peace of mind.

### **Initiative: Introduction of tenancy systems for U-Turn families (local government)**

Create a system which helps children move back near their aging parents to take care of them by adding U-Turn families (those returning to the Moto-machi district after having left) as eligible under the special residency permission system for young families.



A Better Town

4 A Town of Cultural Exchanges

With a higher ratio of international residents in the Moto-machi district compared to other areas in Hiroshima City, we recognize the need for support which overcomes differences in culture and lifestyles in dealing with everyday issues such as garbage disposal or noise levels. Therefore, we seek to improve how we provide explanations and information to aid foreign residents in their understanding of unwritten Japanese social rules, customs, and culture, to help make their transition to life in Japan easier. Our goal is to build a town full of cultural exchanges where international and Japanese residents find mutual understanding and respect through recognizing differences in lifestyle and culture.



Principle Initiatives

- **Support for International Residents**
  - Establish a consultation desk staffed with international citizen counselors
  - Create and distribute fliers with information about Japanese social rules/etiquette
  - Improve quality of explanations/materials given to new international residents upon occupancy
- **Create a Place Where International Residents and Japanese Residents Can Interact**
  - Create opportunities and places for interaction with international residents
  - Hold various activities to facilitate interaction

Priority Item Support for international residents

With the high percentage of international residents in the district, we aim to promote understanding of the Japanese way of life through measures such as improving the quality of explanations/materials given to new international residents upon occupancy of municipal housing, and the establishment of a consultation system.

Priority Initiative: Establish a consultation desk staffed with international citizen counselors

Establish a regular consultation desk staffed with international citizen counselor who speaks Chinese to help facilitate building a living environment in which international residents and their Japanese neighbors can live together in peace and understanding.

Target	A 100% satisfaction rate among those who visit the consultation desk.
Responsible Party: Local Community and Local Government	<b>Role of the local community:</b> Cooperate with and offer advice to the international resident counselor when asked about matters such as community activities. <b>Role of the local government:</b> Secure a Chinese-speaking international resident counselor and appointing them to the Moto-machi Management Office, reception tasks, etc.

Initiative: Create and distribute fliers with information about Japanese social rules/etiquette (local community/local government)

Create, distribute, and post fliers in English and Chinese about Japanese social rules/etiquette, such as garbage disposal and noise levels.

Initiative: Improve quality of explanations/materials given to new international residents upon occupancy (local community/local government)

Encourage following Japanese social rules/etiquette by distributing the Housing Guide book and garbage disposal guide in English and Chinese to international residents upon occupancy.

Initiative Item Create a place where international residents and Japanese residents can interact

Initiative: Create opportunities and places for interaction with international residents (local community)

Create opportunities and places for international residents and Japanese residents to interact, such as the *Hono-bono Moto-machi Salon* and community events.

Initiative: Hold various activities to facilitate interaction (local community/local government)

Manage places which are open to anyone in the community where mutual interaction can take place, such as the *Hono-bono Moto-machi Salon*.  
Note: while this initiative was also introduced in the A Town to Grow Old In section, we believe that it will also be useful in this context as well, and have thus included it once again.



A Better Town

5 A Town of Greenery and Beauty

We are committed to making the Moto-machi district a lush and beautiful town by effectively making use of the former plot of the Moto-machi prefectural housing complex along the former Ota-gawa River and securing wide open spaces that utilize the greenery and waterfronts along the adjacent Chūō Park to create an oasis of greenery for the citizens to relax and unwind.

Principle Initiatives

- **Creating an oasis of greenery**
  - Turning the former plot of the Moto-machi prefectural housing complex into an open green space
- **Reconstruction of Apartment Building 17**
  - Building reconstruction

Initiative Item Creating an Oasis of Greenery

Plans are under consideration to effectively make use of the former plot of the Moto-machi prefectural housing complex along the former Ota-gawa River and secure wide open spaces that utilize the greenery and waterfronts along the adjacent Chūō Park to turn the Moto-machi district into a beautiful oasis of greenery in the near future.

Initiative: Turn the former plot of the Moto-machi prefectural housing complex into an open green space (local government)

The City of Hiroshima was commissioned by the national government to manage the former plot of the Moto-machi prefectural housing complex. Our tentative plan is to turn a portion of this into a green open space which can be used by district residents and city citizens for activities such as community events, etc.



Tentative site of the open green space

Priority Item Reconstruction of Apartment Building 17

Reconstruction of mid-rise Moto-machi Apartment buildings 1-17 is under consideration, keeping in mind utilizing the high-rise apartment buildings and a portion of the former plot of the Moto-machi prefectural housing complex. In regards to the reconstruction of Apartment Building 17: while working to secure to the necessary number of residences for the current occupants and introduce a framework to promote the occupancy of young families, we plan to introduce a community assembly hall for district residents and other vital community spaces and functions to the building. Considerations for Apartment 17’s municipal-run store will be handled separately.

Priority Initiative: Reconstruction of Apartment Building 17

The reconstruction of Apartment Building 17 shall proceed in accordance with the Hiroshima City Municipal Housing Management Plan.

Target	Finalize decisions, including construction location and number of residences, by FY2020; begin construction by 2024.
Responsible Party: Local Government	<b>Role of local government:</b> Reconstruction of Apartment Building 17 in accordance with the Hiroshima City Municipal Housing Management Plan.



A Brighter Town

6 A Town Rich in Community Exchanges

In the Moto-machi district, there has been a marked decrease in town activity and vitality, due in part to the development of businesses in the surrounding districts, which has led to a decrease in the use of municipal stores, and to a decrease in district events and regional activities, compounded by the aging of residents and proprietors, as well as the need for building renovation. Thus, we are committed to creating an environment of interactions and exchange, and turning the town into a lively and prosperous place through measures such as the effective utilization of the Moto-machi Shopping Center.



Principle Initiatives

- **Revitalization of the Moto-machi Shopping Center**
  - Using the center as a place for interaction and exchange
  - Improve common use areas, such as rooftops and walkways
  - Advertise for proprietors to open shop for revitalization
- **Building a lively and prosperous Moto-machi district**
  - Improvement of the Moto-machi Project
  - Hold various events to facilitate interaction
  - Hold community events for interaction between young families and district residents
  - Create an environment conducive to participating in community activities

Priority Item Revitalization of the Moto-machi Shopping Center

It has been over 40 years since the construction of the Moto-machi Shopping Center. The center is in need of repair, and while there has been a marked decrease in activity, it nevertheless stands at the very heart of the Moto-machi district, and remains a convenient place for residents in terms of its location and facilities. In the near future, should the decision to be made to consolidate various facilities for everyday living within the district, the shopping center will be the place to do it. Focusing on long-term maintenance/sustainability, we shall work towards turning the center into a lively and prosperous place, carrying out facility renovation and advertising for new proprietors to open up shop, which will in turn lead to revitalization. In particular, we will make use of the central plaza and nearby storefronts as places of interaction and exchange for district residents.

Priority Initiative: Using the center as a place for interaction and exchange

Review public utilization plans for central plaza and nearby storefronts as places of interaction and exchange for district residents.

Target	Begin work on making the center a place for interaction and exchange by FY2021.
Responsible Party: Local Community and Local Government	<b>Role of the local community:</b> Consider/hold events. <b>Role of the local government:</b> Secure space, maintenance/ improvements, etc.

Priority Initiative: Improve common use areas, such as rooftops and walkways

Perform facility renovations, such as water-proofing the roof and switching to LED, in common use facilities in need of improvements (roof, walkways, skylight windows, interior walls, restrooms, etc).

Target	Begin facilities renovations by FY2021.
Responsible Party: Local Government	<b>Role of the local government:</b> Conduct renovations which take into consideration the opinions and needs of district residents and proprietors.



# Chapter 4: Initiatives for the Future

**Priority Initiative: Advertise for proprietors to open shops for revitalization**

Upon consulting with the shopping district union, conduct open calls for proprietors (of designated businesses and hours of operation) with the potential to thrive and succeed to open shop.

Target	Conduct open calls for proprietors of designated businesses and hours of operation at least twice per year.
Responsible Party: The Local Government	<b>The role of the local government:</b> Consider criteria and conduct open calls for candidates, handling of applications, etc.

**Initiative Item** Building a lively and prosperous Moto-machi

Interactions and connections between people are of the utmost importance. We are committed to building a lively and prosperous town through measures such as creating opportunities and places for interaction and exchange between district and non-district residents.

**Initiative: Improvement of the Moto-machi Project (local community/local government)**

The Moto-machi Project is an initiative in cooperation with Hiroshima City University in which young people are primarily involved in creative cultural arts and community exchange based on the idea of spreading the word about Hiroshima’s recovery and creativity from Moto-machi. The project has three methods of spreading information:

- 1) Learning (about what makes Moto-machi unique)
- 2) Creating (a more attractive Moto-machi)
- 3) Connecting (the people inside and outside of the district)

Having these young people running various events inside of Moto-machi also helps to define the district as a place for young people.

**Initiative: Holding various activities to facilitate interaction (local community/local government)**

Manage places where the community can casually come together to interact, such as the *Hono-bono Moto-machi Salon*.

Note: while this initiative was also introduced in the A Town to Grow Old In section, we believe that it will also be useful in this context as well, and have thus included it once again.

**Initiative: Hold community events for interaction between young families and district residents (local community)**

To follow-up after young families/families raising children move in, we will hold community events for young families and district residents aimed at promoting an environment which is conducive to active participation in community activities and at strengthening the connections between young families and district residents.

Note: while this initiative was also introduced in the Living in Harmony Across Generations section, we believe that it will also be useful in this context as well, and have thus included it once again.

**Initiative: Create an environment conducive to participating in community activities (local community)**

Communicate and make information about community activities and events accessible to residents in advance to make it easy for young families/families with young children to participate.

Note: while this initiative was also introduced in the Living in Harmony Across Generations section, we believe that it will also be useful in this context as well, and have thus included it once again.



Memorial Bon Dance for Victims of the Atomic Bombing (held every August) (1)



Memorial Bon Dance for Victims of the Atomic Bombing (2)



Moto-machi Project Headquarters (M98)



Moto-machi Project



Event at the Moto-machi Shopping Center Central Plaza (1)



Event at the Moto-machi Shopping Center Central Plaza (2)



1) Establish the Moto-machi District Revitalization Promotion Council (name subject to change)

To ensure that the plan proceeds effectively, we shall establish the Moto-machi District Revitalization Promotion Council (name subject to change) comprised of members such as district resident representatives and the staff of related divisions at the City of Hiroshima. This committee shall meet at least once per year, and shall be in charge of managing plan progression, such as reveiwing how the stated initiatives are progressing and evaluating their effectiveness.

(a) Council Name

Moto-machi District Revitalization Promotion Council (name subject to change)

(b) Responsibilities of the Council

- (i) Reviewing how the stated initiatives are progressing
- (ii) Evaluating the effectiveness of the initiatives
- (iii) Considering new revitalization initiatives

(c) Council Members

District resident representatives and the staff of related divisions at the City of Hiroshima, etc

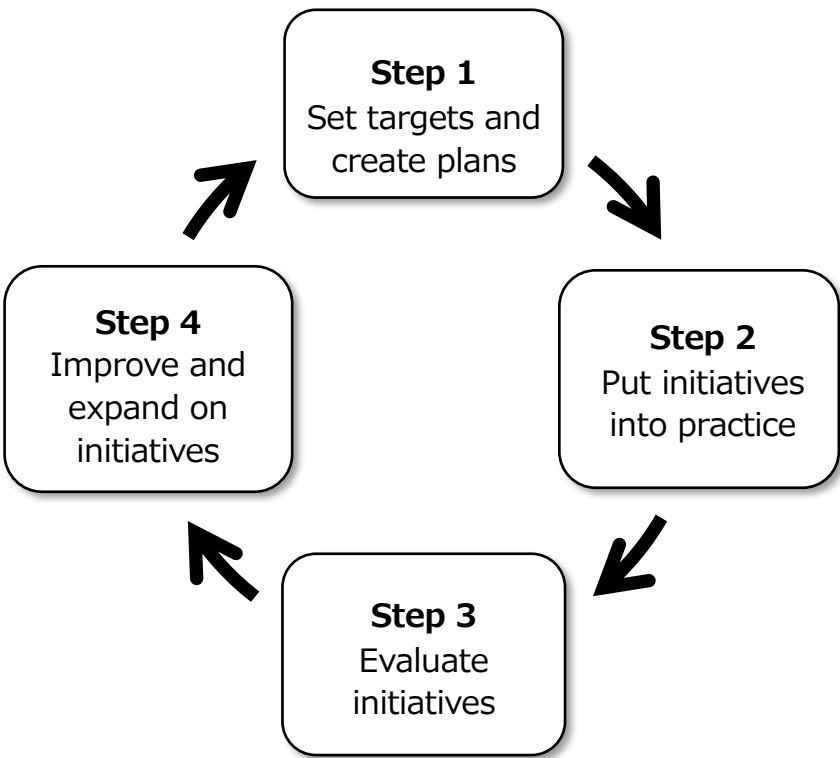
Note: Council members shall be chosen to reflect the various needs of the initiatives put forth in this plan.

(d) Meeting Frequency

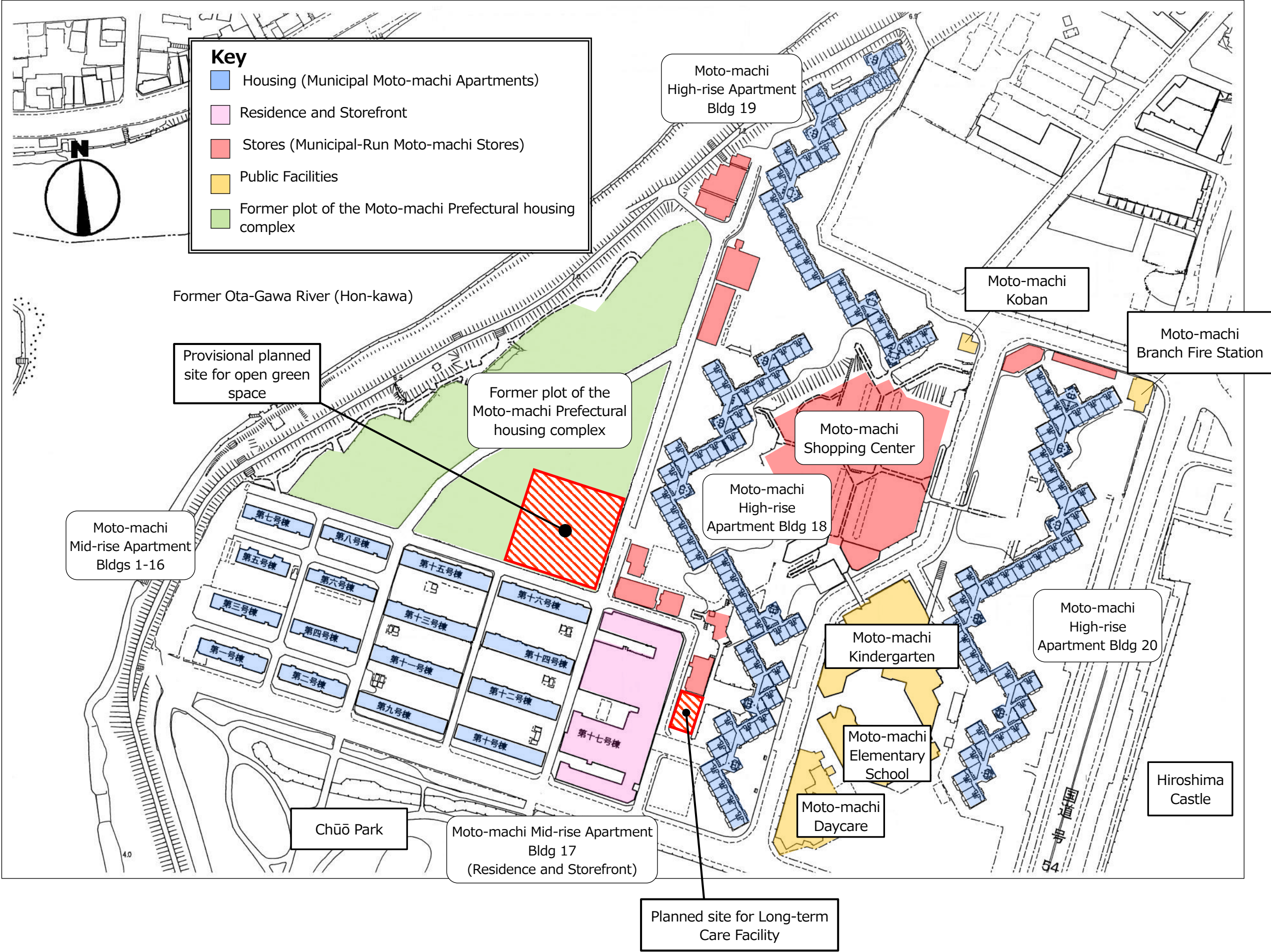
At least once per year

(e) Plan Promotion

The role of the promotion council is to review how the initiatives stated in the plan are progressing and evaluate their effectiveness. To ensure that these initiatives are as effective as possible, the council shall improve and expand upon initiatives while repeating the following four steps:









## Attached Document: Moto-machi District Revitalization Plan Council

### 1) Moto-machi District Revitalization Plan Council

#### (a) Outline

The Moto-machi District Revitalization Plan Council was established in May 2019, and has since met to discuss and consider various aspects of revitalization. Comprised of members such as community organization representatives and the staff of related divisions at the City of Hiroshima, the committee is in charge of listening to the voices of district residents and facilitating discussions regarding the Moto-machi District Revitalization Plan and what it shall entail.

#### (b) Members

	Position/Job Title	Name
District Residents	Moto-machi District Social Welfare Council Chair	Tokuhiro Chikatoshi
	Moto-machi United Residents Association President	Setoguchi Toshikazu
	Moto-machi United Residents Association Vice President	Nakamura Kazumasa
	Moto-machi District Social Welfare Council Vice Chair	Arima Yūji
	Moto-machi District Sports Association President	Honda Tadao
	Federation of Moto-machi School District Kids Clubs President	Ueda Naritoshi
	Moto-machi Elementary School Parent-Teachers Association President	Yamamoto Kishiko
The City of Hiroshima	Director of the Senior Citizens Welfare Department, Health and Welfare Bureau	Hashiba Tadaharu
	Director of the Housing Management and Moto-machi District Revitalization Department, Urban Development Bureau	Imatomi Masao
	Naka Ward Office Deputy Director General	Ishida Teruto

#### (c) Council Meetings

Meeting Number	Date	Discussion Topics
1	May 27, 2019	<ul style="list-style-type: none"> <li>• Successes and issues with initiatives under the Moto-machi Housing District Revitalization Plan</li> <li>• Amendment policy for the Moto-machi Housing District Revitalization Plan</li> </ul>
2	October 28, 2019	<ul style="list-style-type: none"> <li>• Framework for the new revitalization plan</li> <li>• Initiatives under the new revitalization plan</li> </ul>
3	January 7, 2020	<ul style="list-style-type: none"> <li>• Preliminary draft of the Moto-machi District Revitalization Plan</li> </ul>
4	Cancelled under the City of Hiroshima's Novel Coronavirus (COVID-19) Prevention Measures	<ul style="list-style-type: none"> <li>• Draft of the Moto-machi District Revitalization Plan</li> <li>• Promotion system and progress management after the plan has been set</li> </ul> <p>Note: In lieu of the Fourth Meeting, we sought approval and opinions on the Revitalization Plan (Draft) from each committee member separately.</p>



Attached documents: List of Plan Initiatives

Section	Item	Initiative	Responsible Party	Page
1) An Intergenerational Town	Priority Item: Promoting residency of young families/ families raising children	Priority: Implement special residency permission and make efforts to welcome new residents	Local community/local government	5
		Priority: Secure residents who can be active right away in the community (U-Turn families)	Local community/local government	6
		Priority: Call for housing specifically targeted at young families/families raising children and make efforts to welcome residents	Local community/local government	
		Secure parking space for special residents	Local community/local government	
		Secure housing for families of 4 or more	Local government	
		Build the framework for a Volunteer Bank geared towards young families	Local community	
	Making it easy to be active	Hold community events for interactions between young families and district residents	Local community	
		Create an environment conducive to participating in community activities	Local community	
2) A Town to Raise Your Children In	Priority Item: Further improvement of education at Moto-machi Elementary School	Priority: Thorough guidance based on individual academic abilities	Local government	7
		Priority: Implement afterschool classes	Local community/local government	8
		Better communication between the daycare service, kindergarten, and elementary school	Local government	
	Priority Item: Further improvement of daycare services/early childhood education	Priority: Further improve support systems tailored to individual needs	Local government	
		Priority: Promote global understanding in children and their parents/guardians	Local government	
	Creating an environment conducive to raising children	Operation and usage of the <i>Hono-Bono Bunko</i> Library Moto-machi	Local community	
		Create safe spaces for children to play/learn in the community	Local community/local government	
		Further improve and strengthen child safeguards and neighborhood watches	Local community	
3) A Town to Grow Old in	Priority Item: Building/improving facilities to support senior citizens	Priority: Introduction of long-term care facility with lodging accommodation	Local government	9
		Expanding barrier-free environments	Local government	10
		Improve living environments to be considerate of senior citizens who may have mobility issues	Local government	
	Creating an environment of mutual support	Checking in on senior citizens in the community	Local community/local government	

Section	Item	Initiative	Responsible Party	Page
3) A Town to Grow Old in	Creating an environment of mutual support	Employment/creating <i>raison d'être</i> for seniors	Local community/ local government	10
		Hold various activities to facilitate interaction	Local community/ local government	
		Everyday support for seniors	Local community/ local government	
		Further improvement/strengthening of disaster prevention/emergency evacuation measures	Local community/ local government	
	Creating an environment where elderly parents and their children can live close by	Introduction of tenancy systems for U-Turn families	Local government	
4) A Town of Cultural Exchanges	Priority Item: Support for International Residents	Priority: Establish a consultation desk staffed with international citizen counselors	Local community/ local government	11
		Create/distribute fliers with information about Japanese social rules/etiquette	Local community/ local government	
		Improve quality of explanations/materials given to new international residents upon occupancy	Local community/ local government	
	Create an environment where international residents and Japanese residents can interact	Create opportunities and places for interaction with international residents	Local community	
		Hold various activities to facilitate interaction (re-listing)	Local community/ local government	
5) A Town of Greenery and Beauty	Creating an oasis of greenery	Turning the former plot of the Moto-machi prefectural housing complex into an open green space	Local government	12
	Priority Item: Reconstruction of Apartment Building 17	Priority: Reconstruction of Apartment Building 17	Local government	
6) A Town Rich in Community Exchanges	Priority Item: Revitalization of the Moto-machi Shopping Center	Priority: Using of the center as a place for interaction and exchange	Local community/ local government	13
		Priority: Improve common use facilities, such as rooftops and walkways	Local government	
		Priority: Advertise for proprietors to open shops for revitalization	Local government	
	Building a lively and prosperous Moto-machi District	Improvement of the Moto-machi Project	Local community/ local government	14
		Hold various activities to facilitate interaction (re-listing)	Local community/ local government	
		Hold community events for interactions between young families and district residents (re-listing)	Local community	
		Create an environment conducive to participating in community activities (re-listing)	Local community	