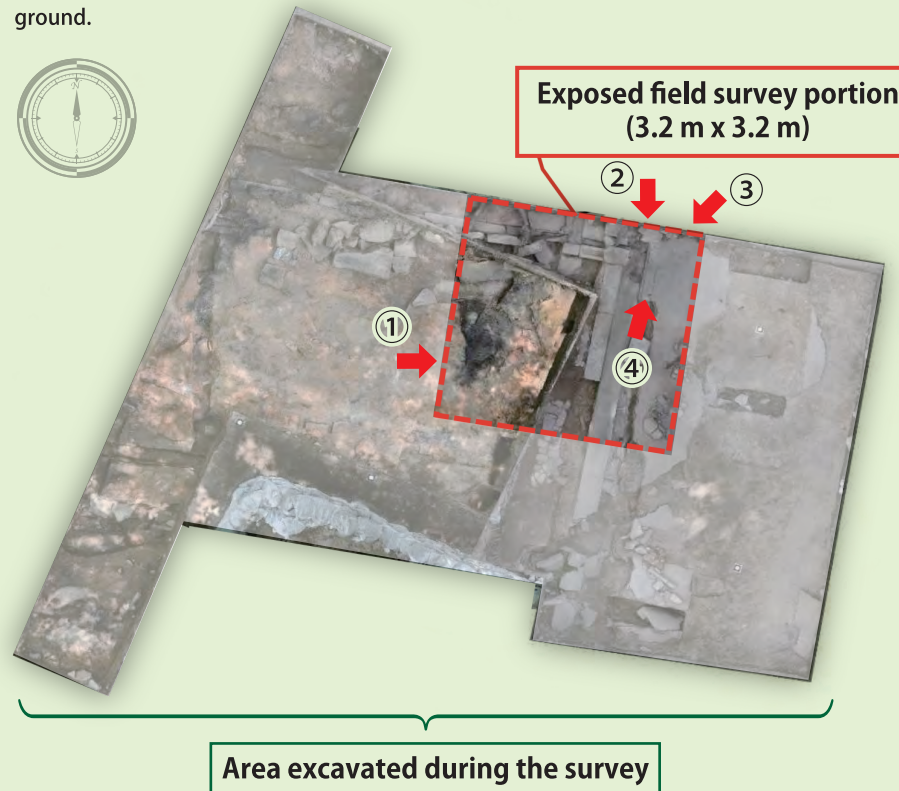


被爆遺構

The Exhibit Facility for Atomic-Bombed Remnants displays artifacts and remnants *in situ* so that the visitors can touch upon the realities of the atomic bombing firsthand. Here, visitors to Peace Memorial Park can trace the history of this area from before the bombing to the present day. Many people once lived in this area, but their daily lives were destroyed instantly by a single atomic bomb. After the bombing, our predecessors worked tirelessly to turn this place into a park that symbolizes peace, and this town was reborn as a beautiful and peaceful place.

The Atomic-Bombed Artifacts of the Former Nakajima District

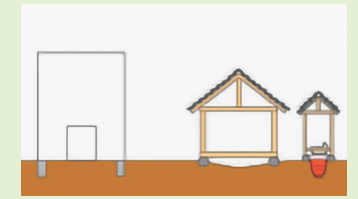
Before the bombing, the area around the Peace Memorial Park was once a bustling area home to many houses and stores where residents went about their daily lives. After the bombing, the area was covered with soil and developed into a park, which is why the foundations of buildings still remain underground in some parts. During a field survey conducted in 2019, the atomic-bombed remnants of houses and roads were found 60 to 90 centimeters below the ground.



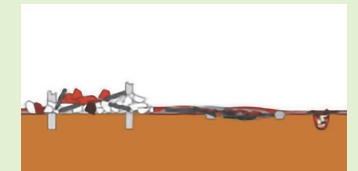
At the Hiroshima National Peace Memorial Hall for the Atomic Bomb Victims, visitors can view a cross-section stratum taken during the construction of the Hall.

How the Soil Layers Were Formed

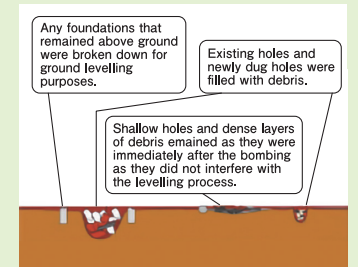
(Ground Levelling at Peace Memorial Park)



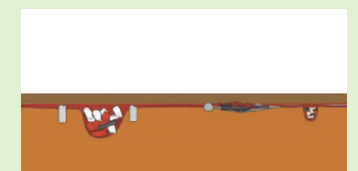
Before the bombing, the area was full of houses and buildings closely packed together.



These buildings were destroyed by the blast wind and intense heat rays following the explosion.



Debris was cleared and the ground was made flat.



Finally, the ground was covered with soil and leveled.

Exhibit Facility for Atomic-Bombed Remnants

- Opens on March 26, 2022
- Hours (Admission ends 30 minutes prior to closing)
 - March-July: 8:30 am-6:00 pm
 - August: 8:30 am-7:00 pm (open until 8 pm on Aug. 5 and 6)
 - September-November: 8:30 am-6:00 pm
 - December-February: 8:30 am-5:00 pm
- Closed: December 30-31
- Admission: Free
- Location: Peace Memorial Park (Nakajima-cho, Naka-ku, Hiroshima City)

Note: there may be times when you cannot visit due to reasons such as monitoring the state of the exposed artifacts. Please be sure to check whether we will be open on our website before visiting.

- Access: it takes about 20 minutes from JR Hiroshima Station
 - Via Bus
 - From the South Gate, take the #24 bus bound for Yoshijima (Platform 4) and get off at Heiwa Kinen Koen (Peace Memorial Park).
 - From the Shinkansen Gate, take the Hiroshima Sightseeing Loop Bus and get off at Heiwa Kinen Koen (Peace Memorial Park).
 - Via Streetcar
 - Take the #1 streetcar bound for Hiroshima Port (Ujina) and get off at Fukuro-machi or Chuden-mae.
 - Take the #2 or #6 streetcar (bound for Miyajima-guchi or Eba, respectively) and get off at Genbaku Dome-mae (Atomic Bomb Dome).

Peace Promotion Division,
Citizens Affairs Bureau, City of Hiroshima

1-5 Nakajima-cho, Naka-ku, Hiroshima 730-0811

Tel: 082-242-7831 / Fax: 082-242-7452



Exhibit Map



Townscape and Life in the District before the Bombing

Introduces the townscape and life in the district before the bombing with photos.

Damages Caused by the Atomic Bombing

Introduces the realities of the atomic bombing.

Atomic-Bombed Artifacts and Remnants

Remnants of the district, such as a gutter along Tenjin-machi's main street, asphalt, and stones marking a property line are displayed *in situ*. Replicas of the carbonized tatami mat and boards are also exhibited here. On the wall on the west side of the exhibit, you can find a video explaining the exhibited items.

A Look at the History Beneath Our Feet

Introduces the history of the former Nakajima District beginning in the Edo period when people began to settle her

