

International Peace Culture City

# Connecting Hiroshima to the Future

## Hiroshima City Comprehensive Plan

Hiroshima City Basic Concepts/Sixth Hiroshima City Basic Plan (2020-2030)

Overview

### Table of Contents

#### Realizing an International Peace Culture City

Introduction (About the Comprehensive Plan) p. 03

#### A World-Renowned City of Peace

Chapter 1: City Planning that Spreads the Will for Peace Around the Globe p. 05

#### A Vibrant and Internationally Inclusive City

Chapter 2: City Planning that Aims to Generate Vibrancy and A Well-Established City Identity p. 07

Chapter 3: City Planning that Brings out the Distinct Character of Each Region p. 11

#### A City That Fosters Well-Rounded Citizens and Where Culture Thrives

Chapter 4: City Planning for Diverse Citizens to Lead Active Lifestyles p. 13

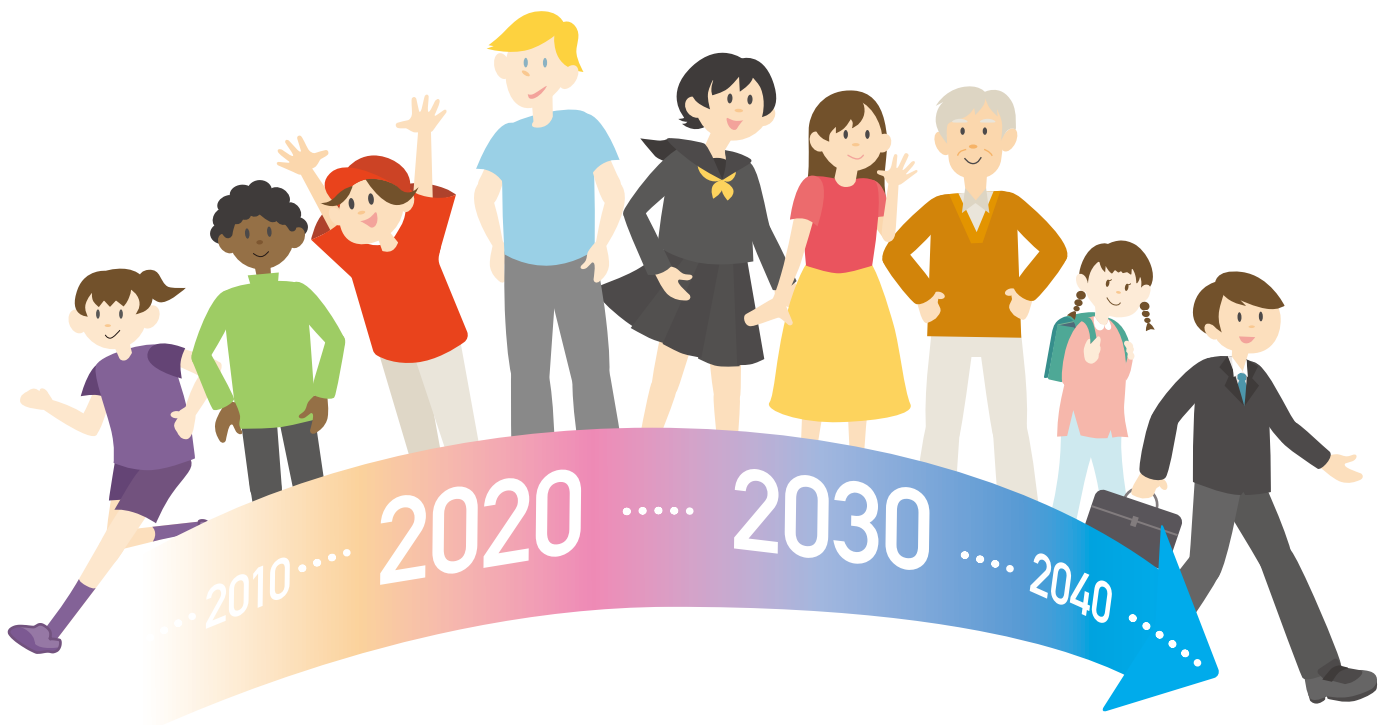
Chapter 5: City Planning that Aims to Enhance Public Health, Medical Care, Welfare, and the Environment for Raising Children p. 17

Chapter 6: City Planning to Live Safely and Securely; Ensuring Future Generations Inherit Our Rich Natural Environment p. 21

Plan Promotion p. 23

International Peace Culture City

# Connecting Hiroshima to the Future



## **A Vision of the City Hiroshima Aims to Be**

This overview was created to share the Hiroshima City Basic Concepts/Sixth Basic Plan with our citizens, and to promote Hiroshima city planning together while working in cooperation and coproduction. May we all build the future of Hiroshima together.

# Realizing an International Peace Culture City

## Introduction (About the Comprehensive Plan)

### Comprehensive Plan

The comprehensive plan defines the basic direction of city planning for Hiroshima and is at the highest level of priority for all plans developed by the City of Hiroshima.

### City Image

Becoming an International Peace Culture City is the highest goal of the City of Hiroshima's city planning.

## The Three Pillars of City Planning that Realizes an International Peace Culture City

### A World-Renowned City of Peace

As the first city in the world to experience the atomic bombing and rebuild itself from the ashes, we will pursue city planning that spreads the will for peace around the globe while working together with world cities and civil society.

### A Vibrant and Internationally Inclusive City

As the largest city in the Chugoku/Shikoku region equipped with well-developed city functions and urban foundations, we will pursue city planning for a vibrant and internationally inclusive city with an active economy and where diverse citizens interact together.

### A City That Fosters Well-Rounded Citizens and Where Culture Thrives

Pursue city planning that fosters rich culture and well-rounded citizens where people of all backgrounds can lead healthy and active lives based on their values and lifestyles while helping one another.

## Our Definition of Peace

- Based on the Hiroshima Peace Memorial City Construction Law (enacted in 1949), which aims to make the first atomic-bombed city in the history of humanity a peace memorial city and symbol of the ideal of realizing, in good faith, lasting peace, the City of Hiroshima was able to recover with help and support.
- Becoming an international peace culture city has been our goal since 1970, and we have worked to turn this image into a reality. The peace that we strive for here refers to the state in which all nuclear weapons around the world have been abolished and there is no war, where citizens in cities across the globe can live quality lives in a good environment with their dignity maintained.
- The City of Hiroshima will continue its policy of city planning as a peace memorial city which truly strives for the realization of true peace.



Cenotaph for the A-bomb Victims (Memorial Monument for Hiroshima, City of Peace)

## The City of Hiroshima and SDGs

- Sustainable development goals (SDGs) are 17 global goals adopted at the United Nations Summit in 2015 to ensure a society where no one is left behind by 2030.
- The realization of a society where no one is left behind is none other than the realization of the peace that the City of Hiroshima strives for. As such, the City of Hiroshima, in its pursuit of becoming an international peace culture city, has made SDGs into goals for the policies and measures outlined in our comprehensive plan and strives for their steady attainment.



The SDG icons at the top of the following pages indicate the goals that each chapter aims to accomplish.

## Seven Big Challenges for City Planning From Here Forward

- 1) We must work to solve issues such as the existence of nuclear weapons, poverty, discrimination, violence, environmental destruction, which threaten world peace.
- 2) As the progression of the declining birthrate and graying of society, as well as shrinking population, contribute to economic stagnation and have a negative effect on citizen life, we must work on solutions to deal with these issues.
- 3) While there are concerns about decreases in activities, the local community plays a vital role in city vibrancy and mutual resident support, and as such, we must work to create sustainable local communities.
- 4) We must create an environment where each citizen can actively participate in various facets of life such as work, community activities, culture and the arts, sports, and more, based on their own values and lifestyles.
- 5) Together with fostering human resources who can thrive amidst rapid technological advancements and globalization, the growth and development of children must be supported by the whole of society while responding to the needs of each individual child and their family situations.
- 6) In order for international visitors to enjoy their stay and for international residents to live here with peace of mind, we must create an environment with improved services for international residents and tourists, as well as one which promotes understanding of local culture and customs.
- 7) Along with continuing planning for disaster-resilient cities, such as improving local disaster preparedness and improving information collection/distribution systems, we must also take measures against largescale environmental issues such as global warming.

To overcome these challenges



Sustainable City Planning

### 1) Initiatives from the perspective of the Regional Urban Area

Based on the Project 2M: Hiroshima Regional Urban Area Vision, and together with neighboring towns and cities that make up the Hiroshima Regional Urban Area, we will strive for the sustainable development of regional urban area while using the strengths of each area to their fullest.

### 2) Expand mutual assistance initiatives

In order to adequately provide the necessary municipal services to citizens, expand and firmly root mutual community support based on the spirit of mutual assistance under the appropriate division of responsibilities with the national and prefectural governments.

## Project 2M: Hiroshima Regional Urban Area Vision

The Hiroshima Regional Urban Area refers to the 24 cities and towns located in a roughly 60 kilometer radius from downtown Hiroshima City. The cities and towns that are deeply connected to Hiroshima City economically and socially, and by developing various policies which make use of local resources across the urban area, we aim to revitalize the economy of the urban area and sustain the population of over two million people who live there.



Cities and towns in the Hiroshima Regional Urban Area

# A World-Renowned City of Peace

## Chapter 1: City Planning that Spreads the Will for Peace Around the Globe

### The Abolition of Nuclear Weapons and the Realization of Lasting World Peace

#### Working together to create world peace

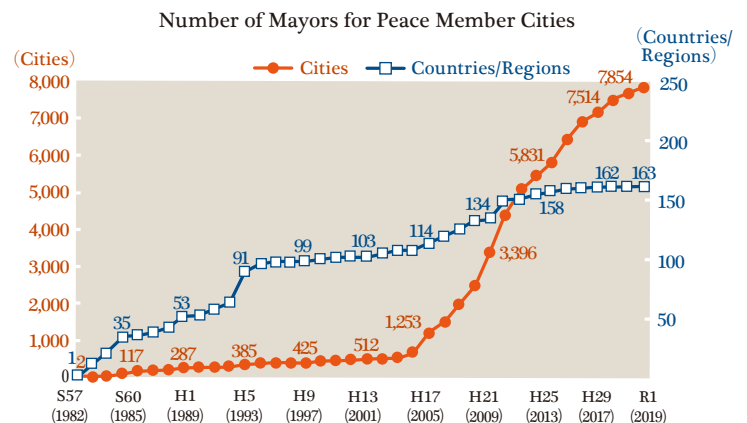
- Work together with various international peace-related organizations to further expand the circle of solidarity working in unison for the abolition of nuclear weapons and the realization of lasting world peace.



Ninth Mayors for Peace General Conference (August 2017)

#### Turn the sentiment that “a world without nuclear weapons is the way the world should be” into a shared value at home and abroad

- Continue efforts to have peace culture (a culture where each citizen thinks about and takes action for peace in their daily lives) take root in society.
- Continue efforts to increase the number of Mayors for Peace member cities.
- Continue efforts to share and spread the will of Hiroshima, which hopes for peace, primarily in conjunction with Mayors for Peace member cities.



Note: Numbers as of the end of December each year

Materials: Researched by the Citizens Affairs Bureau, City of Hiroshima

### Sharing the Will of Hiroshima

#### Promote peace through welcoming visitors

- Continue efforts to have people from all over the world visit Hiroshima, learn of the realities of the atomic bombing, and share our will for peace through methods such as calling for the heads of nations and politicians to visit the atomic-bombed cities.



Meeting for Peace

#### Carry on the legacy of the *hibakusha* to the next generation

- Foster atomic bomb experience legacy successors who carry on the experiences and will for peace of the *hibakusha*; make information about the Peace Memorial Museum more widely available.



Exhibition about the atomic bombing (France)



- Preservation work on the Atomic Bomb Dome, preservation/succession of atomic-bombed buildings/trees.
- Hold atomic bomb/peace exhibitions at home and overseas.
- Implement peace education, strengthen bids for school visits to Hiroshima, advertise and further improve peace tourism (tourism which focuses on going to atomic-bombed buildings/sites and encourages thinking about peace).

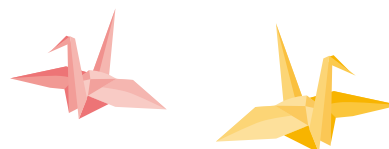


Peace Tourism

## Contributing to World Peace and Securing Peace in the Lives of Our Citizens by Solving Issues such as Human Rights Abuses

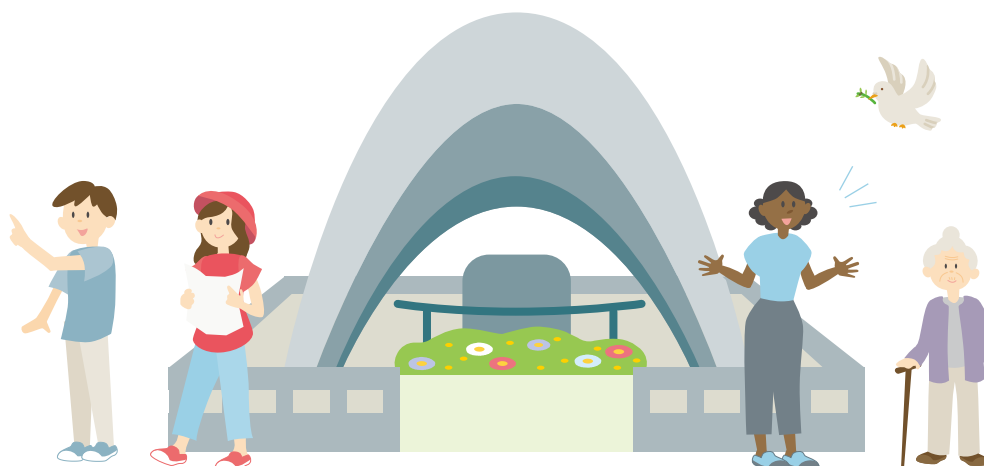
### Conduct studies and research that contribute to world peace

- Together with UN institutions and universities, conduct studies and research related to peace issues and international cooperation, and send/receive information.
- Continue international cooperation activities at the municipal level through initiatives such as accepting trainees from Asian cities.
- Foster human resources who can put ideas and methods for building/maintaining peace out into the world.



### Working to solve issues that threaten peaceful citizen life

- Contribute to solving issues which threaten peace in cities across the globe, such as hunger, poverty, discrimination, violence, and environmental destruction, while working in collaboration with Mayors for Peace member cities.
- Work to ensure that each and every citizen is able to show their individuality and abilities to the fullest extent through human rights education and raising awareness.



# A Vibrant and Internationally Inclusive City

## Chapter 2: City Planning that Aims to Generate Vibrancy and A Well-Established City Identity

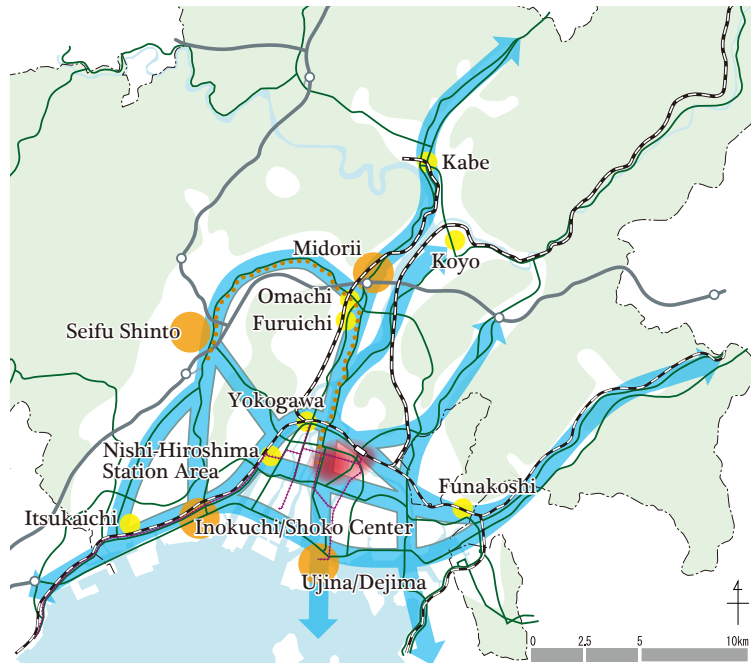
### Promotion of City Planning Downtown and in Hub Districts

#### Continue development of an oval-shaped downtown

- Using national support systems and city planning systems aimed at urban redevelopment, create a new city space by continuing city planning focused on accumulation of advanced urban functions (such as largescale office/meeting facilities and hotels) and the circulation of people.

#### Continue city planning in hub districts

- Using city planning systems, plan for the agglomeration of urban functions based on the characteristics and roles of each district.
- Conduct systematic development/maintenance of urban infrastructure such as roads, parks, and water supply and sewerage systems.



### Build a Transit System Centered on Public Transportation

#### Improve and strengthen public transportation

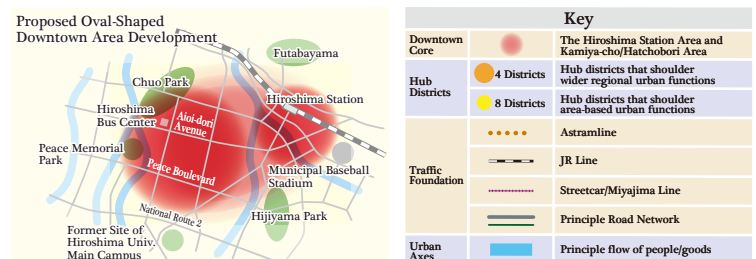
- Work to make transfers between transportation modes easier.
- Strengthen the functions of JR, Astramline, streetcars, and buses.

#### Continue bicycle-friendly city planning

- Work on bicycle lanes and bicycle parking.
- Promote the use of bicycle sharing services near places like tourist spots and commercial facilities.

#### Continue systematic development of road networks

- Develop roads that strengthen traffic between hub districts and neighboring cities/towns, as well as national highway bypasses and Hiroshima expressways.
- In the eastern area, work toward a seamless interchange of roads and trains.



Agglomerative Urban Structure (Downtown, Hub Districts)

### Build a sustainable transit system that uses information communication technology (ICT)

- Provide a convenient, smooth, and sustainable traffic system that makes use of the latest in ICT technology.



Note: This rendering is subject to change based on future designs and discussions with related institutions.

Rendering of the entirety of the outside of the Hiroshima Station South Exit Plaza (as seen looking north from Eki-mae Ohashi Bridge)





## Agglomeration/Strengthening of Industry

### Strengthen competition in the manufacturing industry

- Provide support for initiatives which spur the next generation of development in automobile engineering.
- Provide support for improving the added value of products and services through design and for improving productivity by incorporating AI, and more.

### Expand consumption of products made in the Hiroshima Regional Urban Area

- Expand sales routes of local Hiroshima Regional Urban Area products and encourage local production/local consumption.

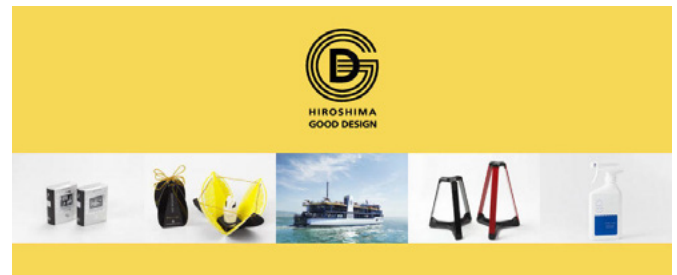


### Provide support for new sectors and growing sectors

- Support new businesses and venture businesses.
- Support the creation of new sectors and development assistance for growing sections such as medicine/welfare, the environment/energy, and tourism.

### Participate in bids for businesses sectors

- Bid for industries and business fields which are expected to have an economic ripple effect on the Hiroshima Regional Urban Area, as well as head office functions.



Hiroshima Good Design Award

## Revitalization of Small to Medium Sized Enterprises (SMEs) And Shopping Arcades

### Revitalize SMEs

- Provide support to SMEs to improve management, and business succession.
- Provide support for ensuring manpower for local SMEs in the mountainous and island regions.

### Revitalize shopping arcades

- Improve the activity and appeal of shopping arcades and the shops located therein, and generate city vitality, as well as revitalize the local community.



Trunk Market (Urabukuro Shopping Arcade Promotion Association)



# A Vibrant and Internationally Inclusive City

## Chapter 2: City Planning that Aims to Generate Vibrancy and A Well-Established City Identity

### Promotion of Agriculture, Forestry, and Fisheries

#### Work to promote agriculture



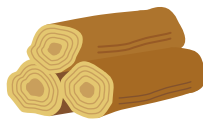
- Work to spread agricultural understanding.
- Foster various kinds of workers, including young people and women.
- Promote the locally grown, locally consumed movement, and expand production and consumption of fresh, safe and trusted agricultural products.
- Work toward providing an effective and stable business environment through improving production bases such as farmland, introducing the latest technologies, and more.
- Conserve city farmland using productive green land systems.
- Continue making effective use of farmland by reusing deserted cultivated land, agglomerating farmland for farmworkers, and more.



Promotion of the Locally Grown, Locally Consumed movement through *Hiroshima Grown* products

#### Work to promote forestry

- Work to spread forestry understanding.
- Foster various kinds of workers to support forest building.
- Promote the use of wood through measures such as building public buildings out of wood.
- Work toward providing an effective and stable business environment, and foster/preserve healthy forests.



Fostering forestry workers

#### Work to promote fisheries

- Promote a locally created, locally raised fishing industry through maintaining and increasing fishing resources, as well as improving fishing environments, and more.
- Work to spread fishery understanding.
- Foster new workers in the industry.
- Work toward providing an effective and stable business environment and expand consumption.

#### Develop a stable supply environment

- Develop a stable supply environment for agricultural, forestry, and fishery products through measures such as developing a new Central Market.



Improving the fishing environment by creating seagrass beds





## Promotion of Tourism

### Work to push tourism in and around the Hiroshima Regional Urban Area

- Work to develop tourism programs in collaboration with cities and towns in the Hiroshima Regional Urban Area, carry out united promotion activities on the whole as the Hiroshima Regional Urban Area.
- Using the Internet, disseminate tourism information about the Hiroshima Regional Urban Area by making use of social media influencers (who have a steady impact on others and society).

### Continue initiatives to improve the hospitality environment for tourists

- Continue to create a variety of multilingual tourism signage, expand free internet connection services, and more.
- Work to ensure that there are no shortages of places to stay during peak tourism seasons (during extended national holidays, etc).
- Work to respond to overtourism and the effect it has on traffic at tourist spots and its burden on the environment.
- Continue with initiatives to foster human resources for tourism and tourism industry workers in collaboration with the university and economic sectors.



Collaborative Overseas Promotion Project by the Four Prefectures of the Seto Inland Sea

### Continue with MICE initiatives (business events where large crowds of people are expected to gather)

- Strengthen MICE-related support systems and discuss creating MICE facilities.

### Continue initiatives to increase tourist numbers and the amount of consumption through tourism

- Hold tourism campaigns centered on food, make use of traditional performing arts such as kagura, and develop tourism programs that highlight the beauty of our natural environment, such as the islands in the Seto Inland Sea.
- Work on renovating and renewing Hiroshima Castle, which conveys the history and culture of Hiroshima.
- Create a single discount ticket that can be used at multiple tourism facilities; improve early morning/late night tourism options.

## Promotion of International Exchange, Cooperation, and Multiculturalism

### Promote international exchange and cooperation in a wide variety of fields

- Facilitate exchanges with cities abroad, such as our sister/friendship cities, as well as international exchanges at the citizen level.
- Strengthen collaboration with UN/international institutions.

### Promote city planning that is considerate of international residents and their needs

- Work to support communication by offering information for daily life in a variety of languages.
- Work to improve support services for daily life, such as disaster preparedness, education, employment seeking, and more.

### Promote initiatives to further heighten multicultural awareness

- Promote initiatives which facilitate understanding of local Japanese culture and customs in international residents.
- Work to heighten multicultural awareness in citizens through school education and awareness-raising activities.



Sister/Friendship City Day (Honolulu Day)

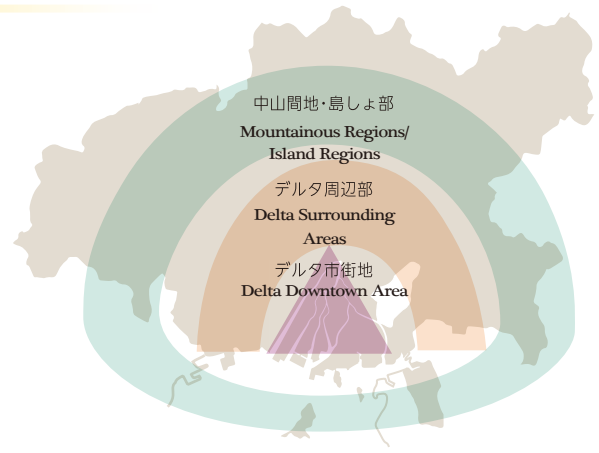
# A Vibrant and Internationally Inclusive City

## Chapter 3: City Planning that Brings out the Distinct Character of Each Region

### Promote City Planning that Highlights the Delta Downtown Area

#### Continue city planning that highlights local resources

- Continue preservation of the Atomic Bomb Dome and redevelopment of the Hijiyama Hill Park area.
- Promote city-wide flower, greenery, and music initiatives, as well as riverside projects that utilize Hiroshima as the City of Water.
- Continue city planning that centers on the use of Hiroshima Castle and the Saigoku Kaido Road.
- Work to facilitate area management activities by citizens, businesses, and landowners that sustain and improve both the good environment and the values of local areas.



Conceptual Map of the Delta Downtown Area, Surrounding Areas, Mountainous Regions, and Island Regions

#### Work toward the formation of a good townscape that highlights the characteristics of our city

- Heighten citizen awareness of the importance of townscaping, provide townscaping guidelines for buildings (etc).
- Preserve and shape the view along the south to north line that runs from the Main Building of the Peace Memorial Museum through the Cenotaph for the A-Bomb Victims to the Atomic Bomb Dome.



### Promote City Planning that Highlights the Delta Surrounding Areas

#### Continue city planning that highlights local resources

- Strive to create an environment where people can gather, and where they can relax and recharge through projects such as the redevelopment of Asa Zoological Park.
- Facilitate city planning that highlights the intellectual resources of universities through collaboration between universities and communities.

#### Continue work on revitalizing housing developments

- Facilitate bringing in families raising children (the leaders of the next generation of local communities).
- Support securing hubs for community activity that make use of abandoned houses and the creation of cityscape guidelines.



Hiroshima: The City of Water



## Promote City Planning that Highlights the Mountainous/Island Regions

### Work on environmental development to attract long-term residents

- Work on environmental development to attract long-term residents from three standpoints: securing employment, securing housing, and building an environment of local acceptance.
- Work to secure human resources who will revitalize the local community.

### Facilitate the development of appealing *sato-yama* \*

- Facilitate environmental development that seeks to effectively use and capitalize on wooden materials that result from tree thinning
- Work to secure an environment where people and wildlife can coexist.

## Improve Citizen-Led City Planning in Wards

### Facilitate citizen-led city planning that will lead to the revitalization of local communities

- Support the continuous citizen action which will lead to the improvement of community appeal and vitality.
- Continue to foster human resources for city planning through consultation and advice from ward offices.

## Contribute to the Development of the Hiroshima Regional Urban Area

### Build a local economic sphere

- Work to strengthen manufacturing industries, encourage local production, local consumption of agriculture, forestry, fisheries, and biomass energy, promote tourism that highlights the best of the wider regional area.
- Improve and strengthen the public transit network in the Hiroshima Regional Urban Area.

### Strengthen cooperation between welfare services

- Develop joint operation of centers for emergency medical consultation and hub hospitals.
- Joint implementation of learning support for households in need.

### Facilitate city planning that highlights local resources

- Facilitate local planning by citizens such as the use of local resources (nature, hot springs, and traditional culture), development of a hospitality environment where students can experience rural life by staying in farming and mountain villages, and more.
- Redevelop public facilities which are tied to citizen activities and initiatives.



Farming and mountain village stay program



Hasshi (Mascot for the Hiroshima Regional Urban Area)

### Mutual usage of municipal resources

- Jointly operate consultation and support desks for home medical care with neighboring cities and towns.
- Make childcare services for sick/convalescent children available for use for citizens of neighboring cities/towns live in.

\**Sato-yama*: Japanese term applied to the border zone or area between mountain foothills and arable flat land.

# A City That Fosters Well-Rounded Citizens and Where Culture Thrives

## Chapter 4: City Planning for Diverse Citizens to Lead Active Lifestyles

### Promotion of Employment that Generates Regional Vibrancy

#### Secure human resources from younger generations

- Work to expand local enterprise internship programs.
- Promote initiatives that enable university graduates and other young adults from the Tokyo Metropolitan and Kansai areas to find employment within the Hiroshima Regional Urban Area.

#### Further improve the employment situation

- Promote initiatives that allow citizens to choose, of their own volition, from a variety of working styles and do work they find rewarding.

### Realization of a Gender Inclusive Society

#### Increase the inclusion of woman in drafting policies and measures

- Promoting measures such as increasing the proportion of female members of advisory and other councils of Hiroshima City, and women in managerial positions.

#### Promote gender equality in the workplace

- Guarantee equal opportunities and treatment for men and women in the workplace, enhance support measures for raising children and elderly care.
- Lead by example and implement flexible working styles, including work from home, and improve harassment countermeasures and the treatment of non-regular employees.
- Promote the spread of initiatives regarding gender equality in the workplace to include enterprises and businesses in Hiroshima City.

#### Eradicate all forms of violence against women and work toward equal human rights

- Eradicate all forms of violence against women, including domestic violence, and work to support victims.
- Work to spread public awareness of the equality of men and women's human rights.
- Spread awareness regarding sexual and reproductive health and rights, and work to implement measures such as those pertaining to the maintenance and improvement of women's health throughout their entire life.

#### Create an environment in which senior citizens can actively participate

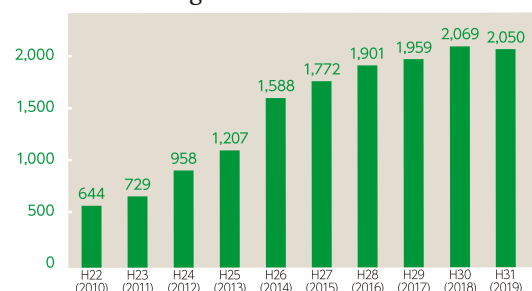
- Promote initiatives that allow citizens to choose, of their own volition, from a variety of working styles and do work they find rewarding.



Long-term paid internships



Number of Recognized Incidents of Domestic Violence



Source: Hiroshima Prefectural Police Data



## Create an Environment that Promotes Lifelong-Learning and Active Participation

### Create an environment tailored to diversity in education

- Work to provide and improve the variety of learning opportunities at libraries, community centers, and other facilities.
- Work to provide educational lectures at universities and other educational institutions for citizens.

### Provide educational opportunities that contribute to solving local and societal issues and work to improve those opportunities

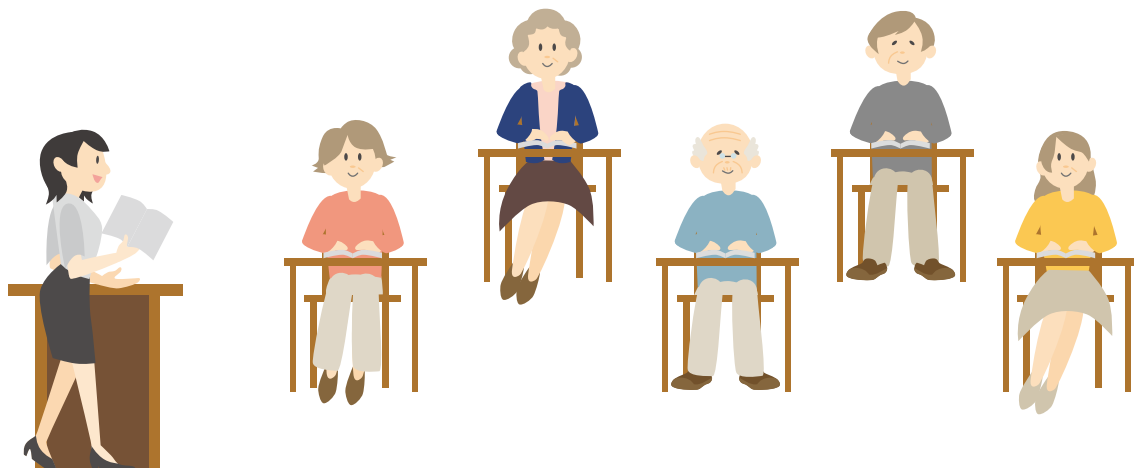
- Provide lectures about issues such as the declining birthrate and aging society, and environmental issues through cooperating and working together with NPOs, universities, enterprises, and other institutions.



Business Support Services (Hiroshima City Central Library)

### Provide places and opportunities to publicize and utilize the outcomes of education and learning

- Create opportunities for citizens to publicize their learning outcomes in community halls and other facilities.
- Promote the planning and implementation of projects and initiatives that make use of learning outcomes from cooperative undertakings between citizens, NPOs, and enterprises.



# A City That Fosters Well-Rounded Citizens and Where Culture Thrives

## Chapter 4: City Planning for Diverse Citizens to Lead Active Lifestyles

### Promotion of Culture



#### Work to promote the cultural arts

- Collaborate with locals in the music scene and economic circles to improve city planning that features music.
- Develop and improve the cultural arts environment through measures such as support for artists.
- Work to ensure thriving society of cultural arts from all types of citizens.

#### Work to spread and promote peace culture

- Continue with projects to spread peace through music, films, manga, animation, and more.
- Work to strengthen transmitting the message of peace in the Museum of Contemporary Art.

#### Proceed with projects in collaboration with related fields

- Promote tourism projects that feature tangible/intangible cultural assets (such as kagura), as well as promote international exchange projects through Japanese traditional culture, such as tea ceremony and calligraphy.

### Promotion of Sports

#### Work to promote citizens playing sports

- Improve opportunities for citizens to enjoy sports regularly.



FISE HIROSHIMA 2019



Riverside Concert

#### Work for the appropriate preservation and use of traditional performing arts/cultural assets, as well as for the continuation of their legacies

- Continue to preserve and maintain cultural assets, such as Hiroshima Castle.
- Strive for even further promotion of citizen-led preservation/continuation work for traditional performing arts/cultural assets.
- Spread the message of the appeal of traditional performing arts/cultural assets; promote uses which increase their value.



#### Work to develop and improve spaces for sports

- Improve organizations and systems that support sports, as well as sports exchanges with other cities.
- Make effective use of existing sports facilities; develop new spaces for sports, such as the soccer stadium.

#### Work to create city vitality through sports

- Bid for international/national sporting events; promote local/corporate pro sports.
- Spread the message of peace and friendship through sports.







## Revitalize the local community and various citizen activities

### Revitalize the local community

- Support securing hubs for community activity that make use of abandoned houses, as well as receiving/transmitting information using ICT.
- Foster and secure next generation leaders.
- Support communities that play active roles in issues such as the realization of an inclusive community society, city planning for disaster preparedness, and creating community vitality; create successful models.



*Marugoto Genki* local community revitalization support project (A. City/Asaminami Ward)

### Revitalize citizen activity

- Secure and foster leaders for community activities in a variety of fields such as peace, tourism, the environment, and more.
- Improve support for citizen organizations such as NPOs; work together in collaboration.

### Promote area management by the local community

- Develop a system where residents associations/ neighborhood associations can use public facilities for the purpose of projects which create vitality.

### Create an environment that makes it easy to participate in community activities

- Create an environment that makes it easy for municipal employees and citizens to participate in community activities through the spread of volunteer leave systems.



# A City That Fosters Well-Rounded Citizens and Where Culture Thrives

## Chapter 5: City Planning that Aims to Enhance Public Health, Medical Care, Welfare, and the Environment for Raising Children

### Realization of Inclusive Community Society

#### Build a comprehensive support system in the community

- Strive to promote community welfare activities by the citizens.
- Create an environment where citizens are aware of livelihood issues and work to try and solve them.
- Provide support for solving issues which are difficult for citizens to address by themselves.

#### Provide thorough support for the needy

- Cooperate and collaborate with social welfare service corporations, such as social welfare councils, social workers, and children's social workers, to help solve the issues of the needy.



Collaboration between local organizations, consultation/support institutions, and municipal government (Hesaka *Tomo-iki* Net)

#### Continue efforts to protect the rights of those with dementia, the intellectually disabled, and those with mental illnesses

- Further spread awareness of systems to support the lives and asset management of those with limited capacity for judgement, such as those with dementia, the intellectually disabled, and those with mental illnesses.

### Promotion of health maintenance and improvement of medical care systems

#### Work to promote health maintenance and secure healthy and sound lives for our citizens

- Strive to spread awareness and knowledge about illnesses; work to promote health maintenance at every stage of life through measures such as regular check-ups and vaccination.
- Strive to prevent infectious diseases, stockpile protective equipment such as masks, and provide information to citizens, businesses, and more at each stage should an outbreak occur.
- Promote initiatives that spread understanding about infection prevention measures as well as the need to be considerate and understanding of others.

#### Work to secure a hygienic and quality living environment

- Work to secure food hygiene and safety through measures such as the promotion of hygiene management according to HACCP (a new method in hygiene management) in restaurants.
- Promote citizen activities which lead to the improvement of local hygienic environments.

#### Work to create an environment that supports and protects the health of society on the whole

- Work to create an environment promotes health through cooperation with medical associations, local organizations, businesses, and more, by holding events like health walks.
- Work to prevent suicide through consultation and support for mental health issues.

#### Work to improve the medical care system

- Build the Asa Citizens Hospital (Northern Medical Center) and develop the Asa Medical Association Hospital.
- Proceed with discussions to rebuild the existing Aki Citizens Hospital (the hub hospital for the eastern part of Hiroshima City).
- Create a high quality, effective, and efficient medical care system through measures such as strengthening mutual cooperation between medical institutions.
- Develop medical tests and medical care systems which are prepared for the outbreak of infectious diseases.



## Create a Society Suited to the Needs of the Elderly

### Continue to work to maintain the health of the elderly and lessen the need for elderly care

- Expand the number of social salons where seniors can drop by and be social in their local community, as well as the number of hubs which work to prevent the need for elderly care in the community.
- Promote social participation for the elderly through projects such as the Senior Citizens *Iki-Iki* Point System.

### Promote the creation of a community that checks in on the elderly and helps to support them in the spirit of mutual assistance

- Improve the consultation and support systems for integrated community support centers.
- Expand the number of those involved in initiatives to check in on the elderly and support the elderly.



Citizen-led visits to help support the everyday lives of senior citizens (pruning trees and shrubs)

### Continue to develop a system that provides stable and high-quality elderly care services

- Secure and foster human resources to work in elderly care.
- Improve systems which offer care services for senior citizens who live alone and require moderate to heavy care.

### Improve in-house medical care; promote cooperation between in-house medical care services and elderly care services

- Secure institutions and human resources to work in in-house medical care.
- Provide smoother medical and elderly care services through cooperation between multiple professions such as doctors, nurses, and elderly care and support workers.

### Develop communities that are accommodating to those with dementia and their families

- Improve awareness of factual knowledge about dementia, systems for early diagnosis and early treatment, support for everyday life, and more.



Construction of Hiroshima City North Medical Center Asa Citizens Hospital (rendering; subject to change)

# A City That Fosters Well-Rounded Citizens and Where Culture Thrives

## Chapter 5: City Planning that Aims to Enhance Public Health, Medical Care, Welfare, and the Environment for Raising Children

### Support the Independence of Our Disabled Citizens

#### Protect the rights of disabled citizens and work to eradicate discrimination

- Further educate the public about conventions and laws pertaining to the rights of persons with disabilities.
- Increase understanding about disabilities and persons with disabilities, and work towards reasonable accommodation and prohibiting unfair discrimination.

#### Provide support so that citizens with disabilities can live their lives in the communities they are accustomed to

- Coordinate with local organizations, consultation and support offices, and others to improve welfare services as well as consultation and support systems.

#### Support those with disabilities in leading fulfilling lives

- Provide support for academic, sports, artistic, and cultural activities, as well as offer employment support tailored to individual disabilities so that disabled citizens can be active in a variety of ways through their own choices and decision-making.

### Improve Support and Assistance Measures for *Hibakusha*

#### Work to improve support and assistance for the actual needs of *hibakusha*

- Implement measures that meet the actual needs of aging *hibakusha* and their families.
- Improve support for *hibakusha* who live overseas.

#### Support surveys and research regarding radiation exposure

- Support surveys and research regarding the actual conditions of caused by radiation exposure, through measures such as the relocation of the Radiation Effect Research Center to strengthen its functionality.

### Create a Nurturing Environment for All Children

#### Pursue diverse and excellent support for children and parenting

- Provide consultation and support for mother and child health care and parenting.
- Improve infant and pre-school care, as well as after-school childcare support.
- Work to eliminate waiting lists for nursery schools, and improve a variety of childcare services, including extended-hours and temporary childcare services.
- Work toward relieving financial burdens such as medical fees.

#### Support kids who require a high degree of social support

- Improve Child Counseling Office support systems aimed at the prevention and early identification of child abuse, as well as early intervention.
- Improve support for children with disabilities and households in poverty.
- Improve support regarding child rearing for care facilities, foster parents, and other child welfare services.

#### Enhance community childcare environments

- Create an environment that supports childcare across the entire community, through measures such as improving play spaces.



Play space





## Realization of An Education System that Values Each and Every Student



### Promote high quality education fine-tuned to the individual

- Through proper role sharing between the public and private education sectors, create a well-oiled and integrated education system by coordinating between preschool education facilities, elementary schools, junior-high schools, high schools, and universities.
- Provide education that guarantees the attainment of fundamental and basic academic abilities and nurtures well-rounded minds.
- Provide a curriculum that reflects Hiroshima's unique characteristics, such as peace education.
- Improve initiatives that reflect the distinctive features of each school, including high-level education at the Hiroshima Municipal Hiroshima Secondary School and education that meets the individual needs of students at the Hiroshima Special Needs School.
- Further improve the qualifications and abilities of teaching staff.
- Improve educational environments through measures such as developing information and communications technology.
- Review and revise school lunch provision systems, and improve food and nutrition education in elementary and junior-high schools.



Peace Education: Children's Peace Summit 2020

### Raising the next generation

- Foster human resources that will thrive globally and those who will display well-rounded abilities in areas such as sports and the cultural arts.

### Foster sound and healthy young people and cultivate social skills

- Improve support of home-based education and develop countermeasures against harmful content on the internet.
- Improve support for youngsters' occupational self-reliance.

### Promote initiatives to tackle bullying and truancy as well as create sustainable school education systems

- Work towards the prevention and early identification of bullying and truancy, as well as systematic and appropriate intervention.
- Support children's learning through coordinating and working together with families, communities, and schools as a Hiroshima School Network.
- Through measures such as assigning staff with diverse abilities, promote working style reforms in schools.



# A City That Fosters Well-Rounded Citizens and Where Culture Thrives

## Chapter 6: City Planning to Live Safely and Securely; Ensuring Future Generations Inherit Our Rich Natural Environment

### Promote City Planning for a Disaster Resilient City

#### Promote city planning for the redevelopment of areas affected by heavy rain disasters

- Coordinate with the national and prefectural governments to develop infrastructure to integrate check dams, rivers, and roads.

#### Create a disaster resilient urban structure

- Improve countermeasures for landslides, floods, and earthquakes through the development of facilities for disaster prevention and reduction.



### Ensure Safety and Security in Everyday Life

#### Promote city planning for a safe city where crime is less likely to occur

- Increase public awareness about crime prevention and provide crime prevention information.
- Support community-led crime prevention activities and neighborhood watch activities.
- Make the physical environment less conducive to criminal activity and create support systems for the victims of crimes.

#### Improve traffic safety measures

- Work to improve the general public's awareness of road traffic safety through education.
- Improve road environments through measures such as constructing and installing road safety devices, such as traffic mirrors.

### Maintain and Improve the Human Environment

#### Maintain and improve residential environments

- Improve housing performance through supporting earthquake-proofing and barrier-free installations.
- Support community-led creation of cityscape guidelines.
- Improve measures concerning vacant houses, such as proper management, redistribution, and utilization of these buildings.

#### Develop disaster resilient organizational systems

- Develop information gathering and contact systems, as well as support systems for the vulnerable.
- Improve firefighting frameworks developed in collaboration with neighboring towns and cities, and develop medical relief systems.

#### Improve community resilience to disaster

- Improve education and further public awareness about disaster prevention.
- Support disaster drills held by volunteer disaster prevention organizations and the installation of live-feed disaster cameras.

#### Improve consumer policies

- Prevent consumer victimization, and the spread of such activities, as well as promote initiatives designed to help such victims.
- Promote initiatives designed to strengthen consumers' abilities to make good judgements through consumer education.
- Increase public awareness about ethical consumerism so that consumers can make conscious and proactive decisions to choose socially and environmentally responsible products and services.



#### Systematic development of facilities and countermeasures against deterioration

- Systematically develop roads, parks, and water and sewage systems, and maintain them effectively and efficiently.

#### Welfare community planning

- Improve municipal buildings and roads so that everyone, including senior citizens and disabled citizens, can use them safely and with ease.
- Promote making public transport barrier-free.



## Promotion of City Planning for a Disaster Resilient City

### Initiatives designed to prevent global warming (mitigation measures)

- Promote energy-saving measures led by the public, government, and businesses.
- Introduce renewable energy sources, such as solar energy and biomass.

### Initiatives designed to adapt to climate changes (adaptive measures)

- Improve the public's knowledge about how climate change can affect natural disasters.
- Improve response capabilities regarding risks such as storm and flood damage, landslides, heatstroke, and the spread of infectious diseases.

## Promotion of *Zero Emissions City Hiroshima*

### (Initiative for a beautiful and attractive city with a reduced environmental impact)

#### Promote waste reduction and recycling

- Work together with the public and businesses to reduce excess packaging and food waste (food thrown away despite being still safe to eat).

#### Promote proper waste disposal

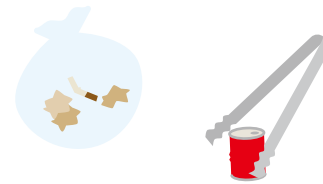
- Work towards the proper management and operation of waste disposal facilities and their systematic development.
- Revise waste disposal categories based on environmental impact and improve waste collection and transportation systems.

#### Promote city planning for a litter-free, clean city

- Promote efforts to make the city cleaner, such as resident-led volunteer cleanups, as well as prevention measures for littering and illegal dumping.



Volunteer cleanup by residents



## Conservation of the Natural Environment and Construction of the Urban Environment

### Promote the conservation of natural environments

- Coordination and cooperation with the public and businesses to promote initiatives that conserve greenery and secure a diversity of wildlife.

### Create a comfortable urban environment in harmony with nature

- Continue city planning that makes the most of Hiroshima's waterfronts, and develop our traffic network and transportation systems to reduce their environmental impact.



Urban environment in harmony with nature

# Plan Promotion

## Promotion of Citizen-Led City Planning

Promoting city planning that is driven more than ever by the active participation of citizens, businesses, and NPOs

- Create mechanisms for cooperation between the municipal government and citizens, businesses, NPOs, and other entities.
- Create an environment in which each and every citizen can learn, take action, and play a part in city planning.

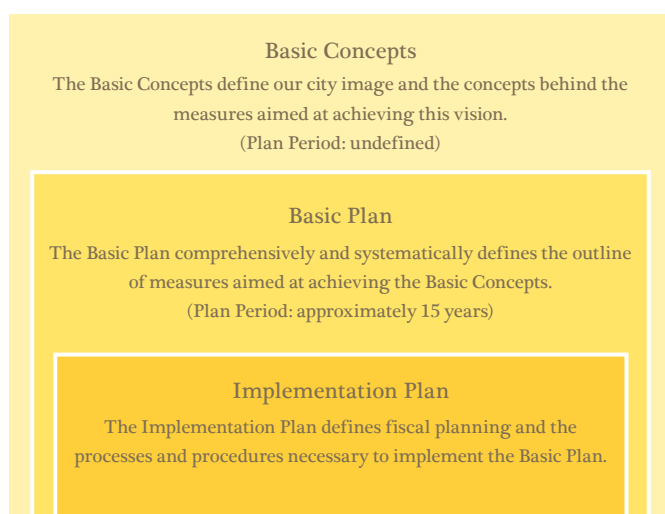
## Promotion of Sustainable Administrative Management

Constantly work towards administrative reform while ensuring the efficient use of our limited administrative resources, such as people, goods, money, and information.

- Together with our neighboring cities and towns that make up the Hiroshima Regional Urban Area (HRUA), engage in forward and flexible thinking, unrestricted by existing frameworks, that focuses on the sustainable development of the entire area.
- Incorporate a variety of initiatives to respond to changes in the socio-economic environment, such as private sector vitalization and knowhow, and cutting-edge ICT and other technologies.

## Comprehensive Plan Organization

- The Comprehensive Plan is composed of the Basic Concepts, the Basic Plan, and the Implementation Plan.



Yearly Fiscal Budgets

Registration Number	広C2-2020-455
Title	Hiroshima City Comprehensive Plan (Overview) (Hiroshima City Basic Concepts/ Sixth Hiroshima City Basic Plan (2020-2030))
Division in Charge	Policy Planning Division Planning and Coordination Department Planning and General Affairs Bureau The City of Hiroshima
Address	1-6-34 Kokutaiji-machi, Naka-ku, Hiroshima 730-8586 Tel: 082-504-2014
Date Published	December 2020
Printed by	Nakamotohon Co., Ltd.
Designed and Illustrated by	Hiroshima City University • Supervised by: Masahiro Nohjima, Visual Communication Design, Department of Design and Applied Arts, Faculty of Arts • Design/Illustration by: Danica Daidoji

リサイクル適性 (A)

この印刷物は、印刷用の紙へリサイクルできます。

Recyclable Printing Materials  
Category A