

Did you know? Young tuberculosis patients born in foreign countries are on the rise in Japan!



How much do you know about tuberculosis (TB)?



Had these symptoms for a prolonged period?

If these symptoms last for **2 weeks or more**, you may have **tuberculosis**



Fever



Cough/Phlegm



Fatigue



Sudden weight loss

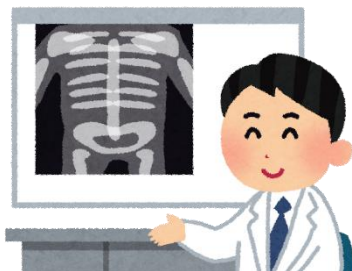


What is tuberculosis (TB)?

TB is caused by inhaling a bacterium called Mycobacterium tuberculosis. The symptoms are very similar to the common cold. Most cases can be cured by regularly taking medicine for 6-9 months, but if left untreated, you can infect those around you, making TB a very dangerous infectious disease.

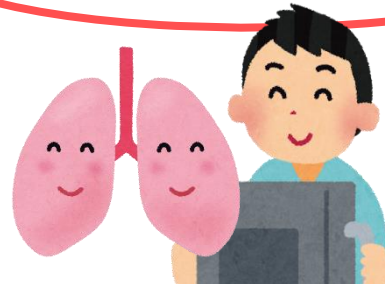


Early detection for TB



If you're feeling unwell, go see a doctor and get checked out

Some schools and workplaces offer x-ray examinations!



Get a chest x-ray once per year